



# Adaptation Database: Promoting LLA

Center for Climate Change Adaptation, NIES

Yuji Masutomi

Forum Host: Co-organisers:



Korea  
Environment  
Institute



Korea Adaptation Center for Climate Change



United Nations  
Climate Change



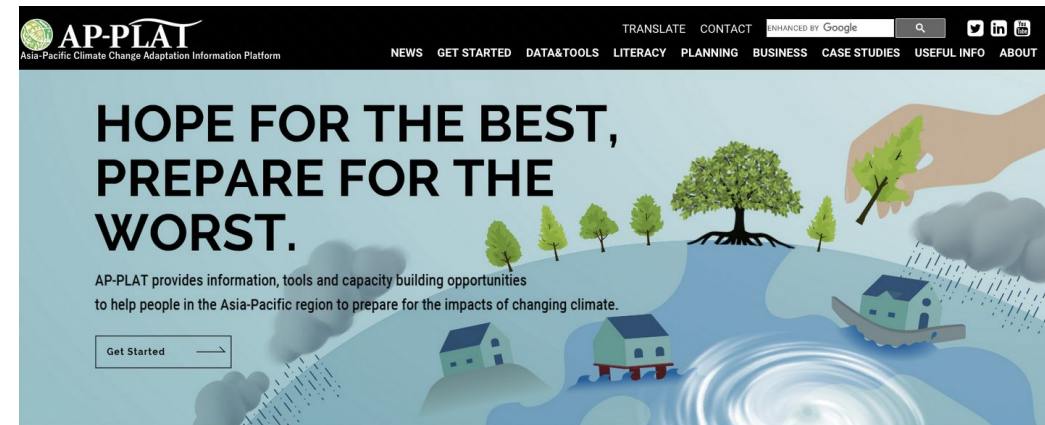
# What is AP-PLAT?

- **AP-PLAT** is a web site providing a wide range of information and data on climate change and adaptation in Asia-Pacific region.

AP-PLAT was launched in Jun. 2019 on the G20 Ministerial Meeting

The goal of AP-PLAT is to promote climate change adaptation by providing

1. Scientific information
2. Scientific tools
3. Capacity development.



## LATEST UPDATES

13 Apr 2023 **NEWS** **NEW**  
Added to the video list page : Introduction to "ClimoCast" in Japanese

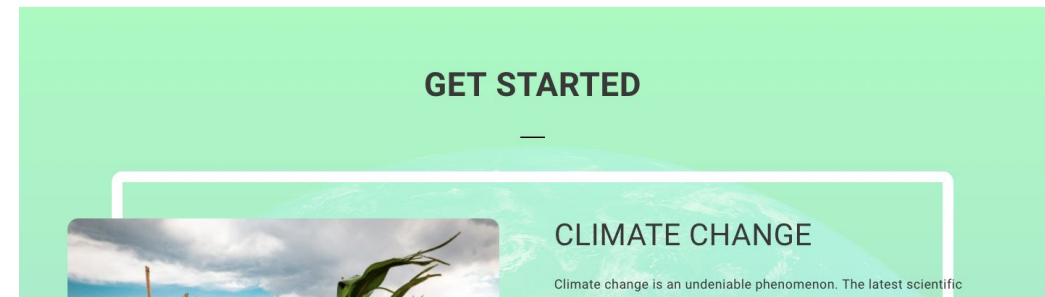
10 Apr 2023 **EVENTS** **NEW**  
Webinar on Accessing and Using Data and Information for Adaptation Planning

30 Mar 2023 **NEWS**  
Updated: Building resilience to compound and cascading disaster risks

24 Mar 2023 **NEWS**  
Added to the video list page : Climate adaptation and resilience building through sustainable waste and resource management

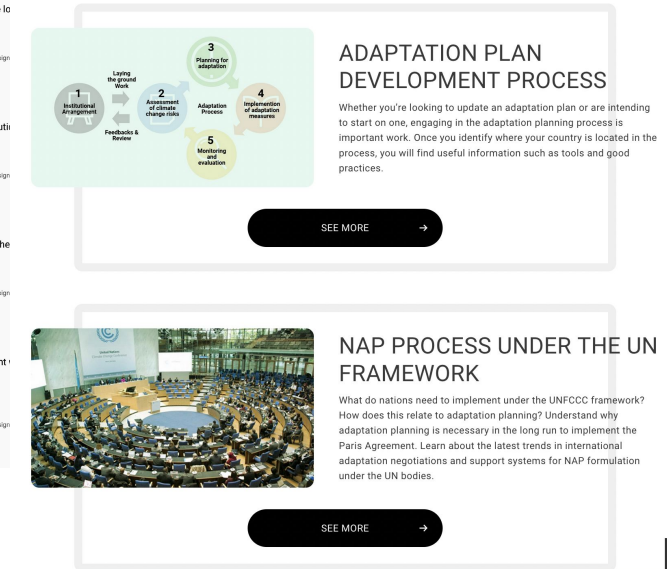
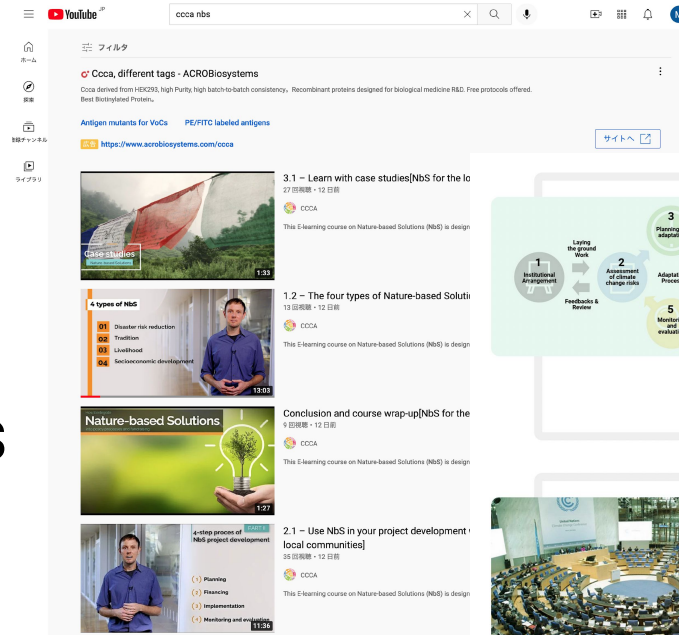
**Tweets from @ap\_plat**  
NIES AP-PLAT @ap\_plat · Apr 13  
Have you taken up any e-learning courses on opportunities and challenges for enhancing and integrating climate change #adaptation and disaster risk reduction? Learn more about #ClimateAdaptation and disaster risk management:

See More



# AP-PLAT provides

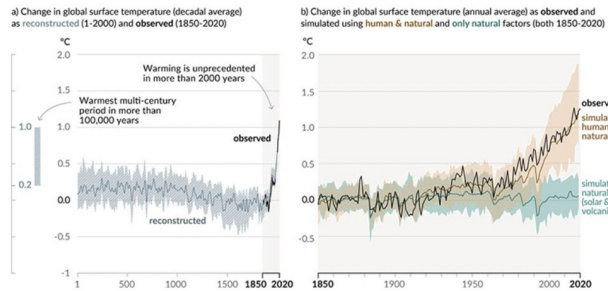
- Scientific information and data
- News on adaptation, events, webinars
- Planning information
- E-learning contents; YouTube videos and more...



## Is the climate really changing?

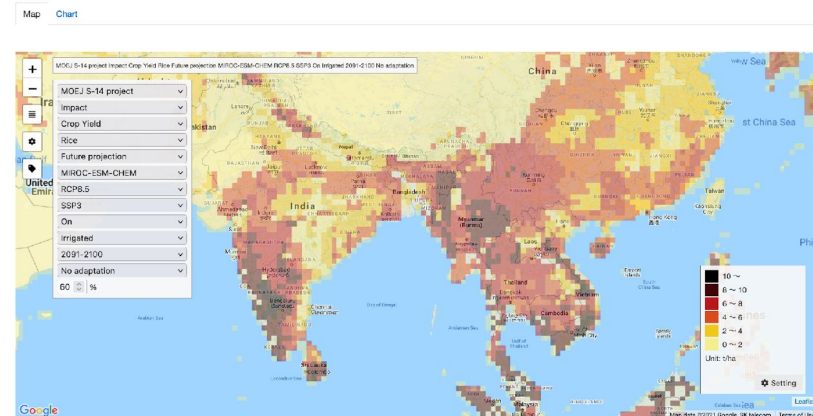
Yes, the climate is changing. The global surface temperature was 1.09 °C higher in 2011–2020 than in 1850–1900. Extreme weather events, such as heatwaves, droughts, and floods, are being observed more frequently.

### Changes in global surface temperature relative to 1850-1900



Changes in global surface temperature relative to 1850-1900 (IPCC AR6 WGI-Figure SPM.1; IPCC, 2021)

## AP-PLAT CLIMATE IMPACT VIEWER



## LATEST UPDATES

- 13 Apr 2023 **NEWS**: Added to the video list page: Introduction to "ClimoCast" in Japanese
- 10 Apr 2023 **EVENTS**: Webinar on Accessing and Using Data and Information for Adaptation Planning
- 30 Mar 2023 **NEWS**: Updated: Building resilience to compound and cascading disaster risks
- 24 Mar 2023 **NEWS**: Added to the video list page: Climate adaptation and resilience building through sustainable waste and resource management
- Tweets from @ap\_plat**: NIES AP-PLAT @ap\_plat - Apr 13: Have you taken up any e-learning courses on opportunities and challenges for enhancing and integrating climate change adaptation and disaster risk reduction? Learn more about #ClimateAdaptation and disaster risk management.

# Just Visit



# How to enhance LLA through AP-PLAT?

One of the answers is hidden in the saying:  
“Learning from others’ good practices is a  
good practice itself”



## Adaptation Database is useful!

- A database of case studies, policy information and organizations engaged in climate adaptation
- To be published this year on AP-PLAT website
- Your case studies can be in the database too!

AP-PLAT  
HOME > HOME > Adaptation Database > LIST VIEW

### ADAPTATION DATABASE - LIST VIEW

Are you looking for information on adaptation practices in a specific geographical region or in a certain sector? You can browse this collection of case studies and country-specific adaptation planning profiles from all over the world.

103 RESULTS

- Center for Climate Change Adaptation (CCCA) - Organization/Network - Asia
- InCORE Project: Reviving Coral Reefs in the Philippines - Case Study - Asia
- Great Sea Reef Resilience Program - Fiji - Case Study - Oceania
- Resilient Sheep and Cattle Grazing - Australia - Case Study - Oceania
- Forest and Farm Facility - Vietnam - Case Study - Asia
- Adaptation to Climate Change through Coastal Afforestation - Case Study - Asia
- Women-led community forest - Nepal - Case Study - Asia
- Water stewardship initiatives - India - Case Study - Asia
- Capacity building for effective river management - Thailand - Case Study - Asia

1 2 3 4 5 6 7 8 9 NEXT

AP-PLAT  
Asia-Pacific  
Climate Change Adaptation  
Information Platform

CONTACT

SITEMAP/SITE POLICY  
Copyright © National Institute for Environmental Studies. All Rights Reserved.

# AP-PLAT Adaptation Database

The screenshot shows the AP-PLAT Adaptation Database interface. At the top, there is a navigation bar with links for HOME, GET STARTED, DATA&TOOLS, LITERACY, PLANNING, BUSINESS, CASE STUDIES, USEFUL INFO, and ABOUT. A search bar is located in the top right corner. Below the navigation bar, the page title is "ADAPTATION DATABASE - LIST VIEW". A brief description asks if the user is looking for information on adaptation practices in a specific geographical region or in a certain sector. Below this, it states "103 RESULTS". A grid of nine case study cards is displayed, each with a title, a small image, and a location tag. A red box highlights the "FILTER" sidebar on the right, which includes a search bar, a "RESET" button, and several filter categories: INFORMATION TYPE (Case Study, Adaptation Policy, Organization/Network), ADAPTATION SECTOR/THEME, ADAPTATION ELEMENT, REGION, COUNTRY, and PUBLICATION YEAR ON AP-PLAT.

- Search by keyword
- Filters: contain Locally-led Adaptation category

## ADAPTATION **SECTOR/THEME**

Agriculture  
Biodiversity/Ecosystem  
Coastal Areas  
Energy  
...  
Life of Citzentry & Urban Life  
**Local Communities**  
Natural Disasters  
Tourism  
Water Environment

## ADAPTATION **ELEMENT**

Adaptation Planning/Policy  
Capacity Building  
Climate Mitigation  
Co-Benefits  
Climate Projection  
...  
International Cooperation  
**Locally-led Adaptation**  
Nature-based Solutions  
Participatory Approach  
Research/Innovation

# AP-PLAT Adaptation Database

## Many case studies on Locally-led Adaptation

AP-PLAT

NEWS GET STARTED DATA&TOOLS LITERACY PLANNING BUSINESS CASE STUDIES USEFUL INFO ABOUT

HOME > Adaptation Database > LIST VIEW > Facilitating Community Collective Action to Save Peatlands - Sumatra, Indonesia

Case Study

### Facilitating Community Collective Action to Save Peatlands - Sumatra, Indonesia

Posted: 28 June 2023 Updated: 05 July 2023

Asia - Indonesia




Photo: Pixabay/Jonathan-Smit

**LOCATION**  
Sumatra, Indonesia

The Indonesian island of Sumatra, located in West Java, is the sixth largest island in Indonesia. More than half of the island is covered with forests and peatlands. The climate is hot and rainy, but in recent years, due to climate change, rainfall has been decreasing. The dry season usually begins around March and lasts about six months.

**ISSUE**  
Increasing risk of peatland fire in Sumatra

Peatland fires that occur during the dry season across Sumatra are a serious problem. There is concern that climate change is reducing rainfall and increasing the risk of forest fires. Fires that occur on peatlands are known to take longer to extinguish. In part, because peatlands are highly functional as carbon stores, the frequency of forest fires can set back climate change

RETURN TO LIST

INFORMATION TYPE  
# Case Study

ADAPTATION SECTOR/THEME  
# Forests/Forestry  
# Local Communities  
# Natural Disasters

ADAPTATION ELEMENT  
# Adaptation Planning/Policy  
# Capacity Building  
# Climate Mitigation Co-Benefits  
# Disaster Prevention/Disaster Mitigation  
# Locally-led Adaptation

REGION  
# Asia

COUNTRY  
# Indonesia

PUBLICATION YEAR  
# 2023

DISCOVER MORE

- Adaptation to Climate Change through Coastal Afforestation
- Integrated Coastal Zone Management and Eco-DRR - Semarang, Indonesia
- Assessing Impacts of Climate Change for Local Adaptation Planning ...
- Managing Water Supply Systems Using Climate Projections - Florida, USA

AP-PLAT

NEWS GET STARTED DATA&TOOLS LITERACY PLANNING BUSINESS CASE STUDIES USEFUL INFO ABOUT

HOME > Adaptation Database > LIST VIEW > Community Smart Farming through Local Capacity Building Program - Malaysia

Case Study

### Community Smart Farming through Local Capacity Building Program - Malaysia

Posted: 28 June 2023 Updated: 23 August 2023

Asia - Malaysia




Photo: EPIC Asia website

**LOCATION**  
Seberang Perai, Malaysia

Seberang Perai is a city in the Malaysian state of Penang. The area has 4070 ha of farmland with about 2000 farmers. Most farmers are engaged in rice cultivation. In recent years, urbanization has been progressing along with population growth, but much of the area is still devoted to farmland.

**ISSUE**  
Low yields and periodic harvest

Although farmers in Seberang had been farming for a long time, their agricultural productivity was declining due to the effects of climate change and changing socioeconomic conditions. First, changes in rainfall conditions have made water management more difficult. In addition, inadequate management of waste from agriculture degraded the environment around farmland, which was also noted as a decline in productivity. For the future, it was necessary to transform the state of

RETURN TO LIST

INFORMATION TYPE  
# Case Study

ADAPTATION SECTOR/THEME  
# Agriculture  
# Local Communities  
# Natural Disasters

ADAPTATION ELEMENT  
# Adaptation Action/Implementation  
# Locally-led Adaptation  
# Participatory Approach

REGION  
# Asia

COUNTRY  
# Malaysia

PUBLICATION YEAR  
# 2023

DISCOVER MORE

- Women-led community forest - Nepal
- Traditional Flood Control "Kasumi-tai" - Chikuma, Japan
- Institute for Global Environmental Strategies (IGES)
- Bioenergy for Achieving Energy Security and Economic Growth - Austria

AP-PLAT

NEWS GET STARTED DATA&TOOLS LITERACY PLANNING BUSINESS CASE STUDIES USEFUL INFO ABOUT

HOME > Adaptation Database > LIST VIEW > Community-based Sustainable Tourism - Gangtey-Phobji, Bhutan

Case Study

### Community-based Sustainable Tourism - Gangtey-Phobji, Bhutan

Posted: 22 March 2023 Updated: 30 March 2023

Asia - Bhutan




Photo by Tourism Council of Bhutan

**ISSUE**  
Tourism development is placing a growing burden on the local natural environment

**SOLUTION**  
The livelihoods of local communities are improved by promoting community-based sustainable tourism rather than tourism development by foreign capital

**A WAVE OF ECONOMIC DEVELOPMENT**  
The Kingdom of Bhutan, a small country in the Himalayas, is known for its unique efforts to develop a balanced nation based on the GNH (Gross National Happiness) concept. The country aims not only for socio-economic development but also for the promotion of conservation of the natural environment and traditional culture. In 1995, Bhutan ratified the Convention on Biological Diversity, and in the same year, the National Assembly passed a constitutional provision that at least 60% of the

RETURN TO LIST

INFORMATION TYPE  
# Case Study

ADAPTATION SECTOR/THEME  
# Biodiversity/Ecosystem  
# Local Communities  
# Tourism

ADAPTATION ELEMENT  
# Adaptation Action/Implementation  
# Adaptation Business  
# Education/Awareness/Information  
# International Cooperation  
# Locally-led Adaptation

REGION  
# Asia

COUNTRY  
# Bhutan

PUBLICATION YEAR  
# 2021

DISCOVER MORE

- Conservation of Kibamba Agro-forestry Heritage Site - Uru Shimboyo, Tanzania
- Managing Grasslands for Sustainable Agriculture - Kumamoto, Japan
- Climate Bridge Fund - Bangladesh
- Only 10 Green for Climate - Smart City - Amsterdam, Netherlands