

# Building the resilience of communities by revitalizing the ITLK system

Menila Kharel

Thematic Lead-Sustainable Agriculture and Markets

Practical Action

Forum Host: Co-organisers:

# A context of agriculture: Lumbini Province

- Dang, Rukum, and Rolpa districts in Lumbini Province
- Agriculture is the main source of livelihood (cereals, vegetable, goat, dairy)
- Out-migration



# Key challenges

- Commercialization-vegetables for more income
- Unsustainable Agriculture Practices  
-unsystematic use of agrochemicals; hybrid seeds/varieties)
- Climate Change Impacts- erratic rains, pests and disease, water scarcity
- Loss of Indigenous Knowledge- gradual erosion of cultural heritage

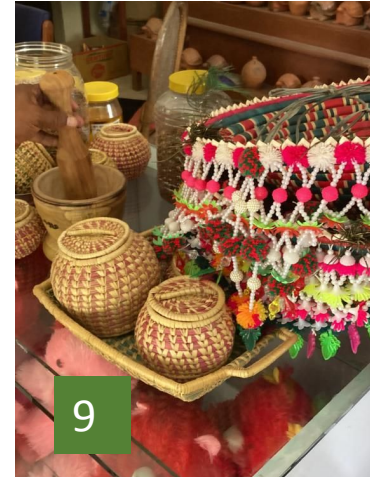
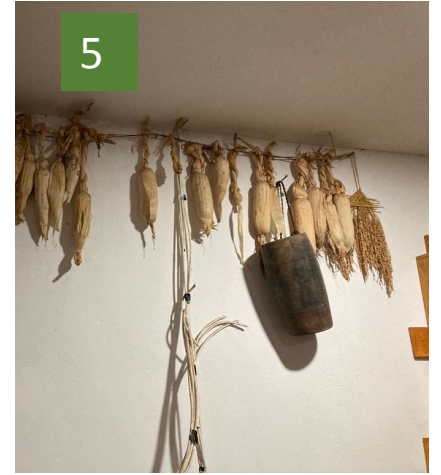


---

## Opportunities for building the resilience :

- **Resilient Agriculture through climate adaptive practices**





• Revitalizing Indigenous Knowledge

- **Enabling Environment:** Building partnerships with governments, NGOs, media, and other stakeholders
- **Regional Cooperation:** Collaborative efforts among neighboring and sharing best practices and experiences for more resilient food systems at the regional level.