

## HOW DID IT BEGIN?

### 2010 UNFCCC COP16/CMP6

The Cancun Agreement was adopted and Parties agreed to enhance mitigation actions for sustainable development. Developing countries are expected to take nationally appropriate mitigation actions and develop low carbon development strategies, supported and enabled by technology, financing and capacity building.

### 2012 APN 17TH IGM/SPG MEETING

APN countries at its 17th IGM/SPG Meeting endorsed the **Low Carbon Initiatives (LCI) framework** to support regional research, capacity development and communication/networking activities on low carbon development.

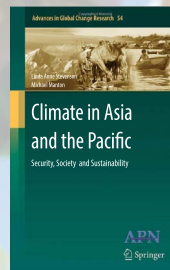
### LAUNCH OF THE LCI FRAMEWORK

A special call for expressions of interest was launched in July 2012 under the LCI framework. **Seven proposals were awarded in March 2013.**

As part of the communication activity under the LCI framework, APN supported the organisation of the first Annual Meeting of **LoCARNet** in October 2012, and is collaborating with LoCARNet on promoting pathways towards low carbon development in the second LoCARNet Meeting, 24–25 July 2013.

## WHAT'S NEW?

To be published in August 2013, *Climate in Asia and the Pacific: Security, Society and Sustainability* considers five broad aspects of climate change, including *Climate and Economy: Towards Low Carbon Development*, which will be useful to low carbon research communities.



## GET INVOLVED

The Asia-Pacific Network for Global Change Research (APN) is a network of 22 member country governments that promotes global change research in the region, increases developing country involvement in that research, and strengthens interactions between the science community and policy makers.

For further information about the APN and to get involved in our activities, please visit [www.apn-gcr.org](http://www.apn-gcr.org).

## CONTACT

APN Secretariat, East Building, 4F  
1-5-2 Wakinohama Kaigan Dori  
Chuo-ku, Kobe 651-0073, JAPAN  
Tel : +81-78-230-8017  
Fax: +81-78-230-8018  
[www.apn-gcr.org](http://www.apn-gcr.org)

# LOW CARBON INITIATIVES FRAMEWORK

PHOTO BY IAN T. EDWARDS

PHOTO BY PUCKET PAGES



Ministry for the  
**Environment**  
Manatū Mō Te Taiao



United States  
Global Change  
Research Program

# APN

Asia-Pacific Network for Global Change Research

ASIA-PACIFIC NETWORK FOR  
GLOBAL CHANGE RESEARCH

## WHAT IS THE LCI FRAMEWORK?

The APN launched the Low Carbon Initiatives (LCI) framework with a view to enhancing mitigation actions across countries in the region to help achieve the global vision for a low carbon, sustainable future. Since 2012, the LCI has been supporting regional research, capacity development and networking activities related to low carbon development. This framework is under APN's thrust on climate change mitigation and has the following three-pronged approach:

### 1. Regional-based research activities

- Research to develop and enhance components of integrated assessment models.
- Research on regional-based low carbon development pathways and scenarios.
- Cross-cutting research on low carbon development including studies on traditional knowledge in the region.

### 2. Capacity building activities

- Training workshops that develop scientific capacity to formulate low carbon scenarios and pathways.
- Dialogue between researchers and national/local policy makers in developing member countries.
- Development of educational toolkits on low carbon development.

### 3. Communication and networking activities

- organised with partners including the Low Carbon Asia Research Network (LoCARNet) on:
- Institutional knowledge sharing.
  - Information and knowledge dissemination.
  - Regional collaborative research and networking in Asia.

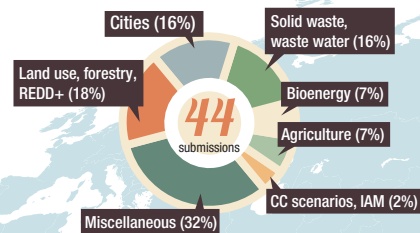
## APN EFFORTS ON CLIMATE CHANGE MITIGATION

APN has funded numerous projects related to mitigation under ARCP and CAPaBLE. It assisted in the delivery of strategies to enhance the mitigation effort of developing countries by improving their capacities to measure and assess GHG emissions. In terms of regional-based research, APN has supported field projects which led to a number of peer-reviewed papers that made an important contribution to society's understanding of the relationship between GHG emissions and land use change.

APN has also supported a series of scoping, development and training workshops on GHG inventory compilation, sustainable technology transfer for mitigation, and measuring GHG emissions from landscapes.

### THEMATIC DISTRIBUTION

of LCI Submissions

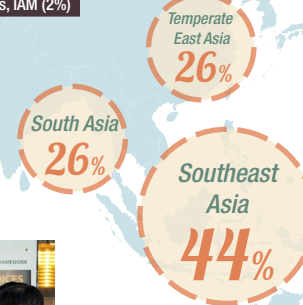


**LEARN MORE**  
About LCI projects online



### PROJECT COLLABORATOR INVOLVEMENT

by sub-region



## ONGOING PROJECTS

under the LCI framework

REGIONAL RESEARCH

CAPACITY DEVELOPMENT

- Capacity Building for Implementing a "Measurable, Verifiable and Reportable (MRV)" Model in a Mid-Sized Thai Municipality
- Strengthening Community Voices In REDD+ Policy
- Identification of Policy and Institutional Gaps, Drivers and Strategies to Scale-up Low Carbon and Energy Efficient Technology Application in the Construction and Infrastructure Sectors in South Asia
- Understanding and Quantifying the Water-Energy-Carbon Nexus for Low Carbon Development in Asian Cities
- Assessment of Carbon Sequestration through Vermitechnology in Organic Farming
- Integrated Sustainability Assessment of Bioenergy Potentials in Asia: An Application of a Hybrid Approach on Trade-offs and Pathways (PIC-STRAP)
- Low Carbon Urban Infrastructure Investment: Cases of China, Indonesia, and Japan

## LOW CARBON DEVELOPMENT: ASIA-PACIFIC PERSPECTIVES

As an integral part of countries' mitigation strategies, low carbon development requires action from different fields across all sectors. This is perfectly manifested by the expressions of interest (EOIs) received under the LCI framework.

The 44 EOIs received encompassed various disciplines, ranging from land use and forestry to waste management and integrated assessment modelling.

The regional balance and thematic diversity shown by LCI projects validate that options for low carbon development in developing countries differ from one country to another, and that from developed countries' viewpoint, LCI is a new development opportunity through mitigation.