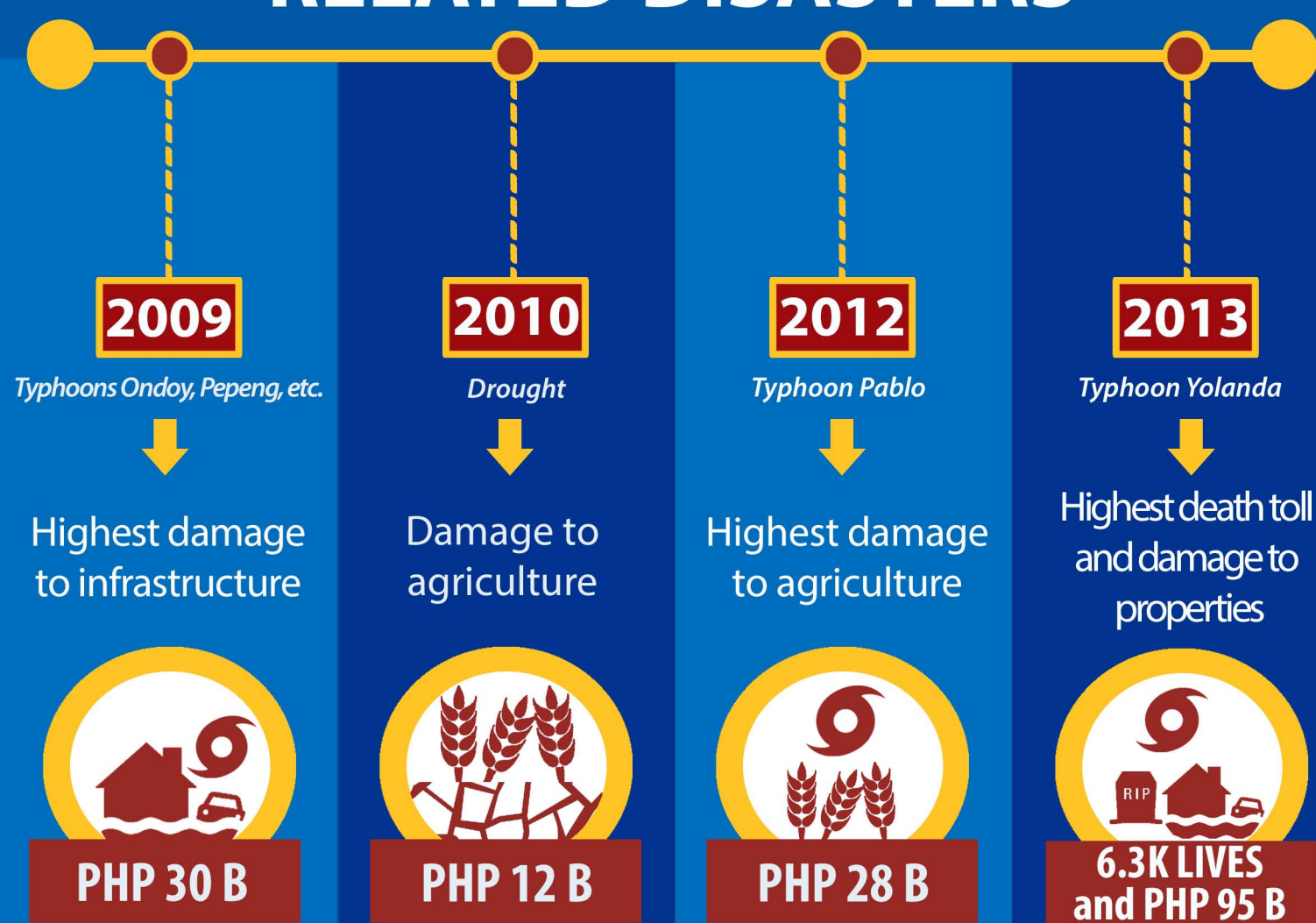
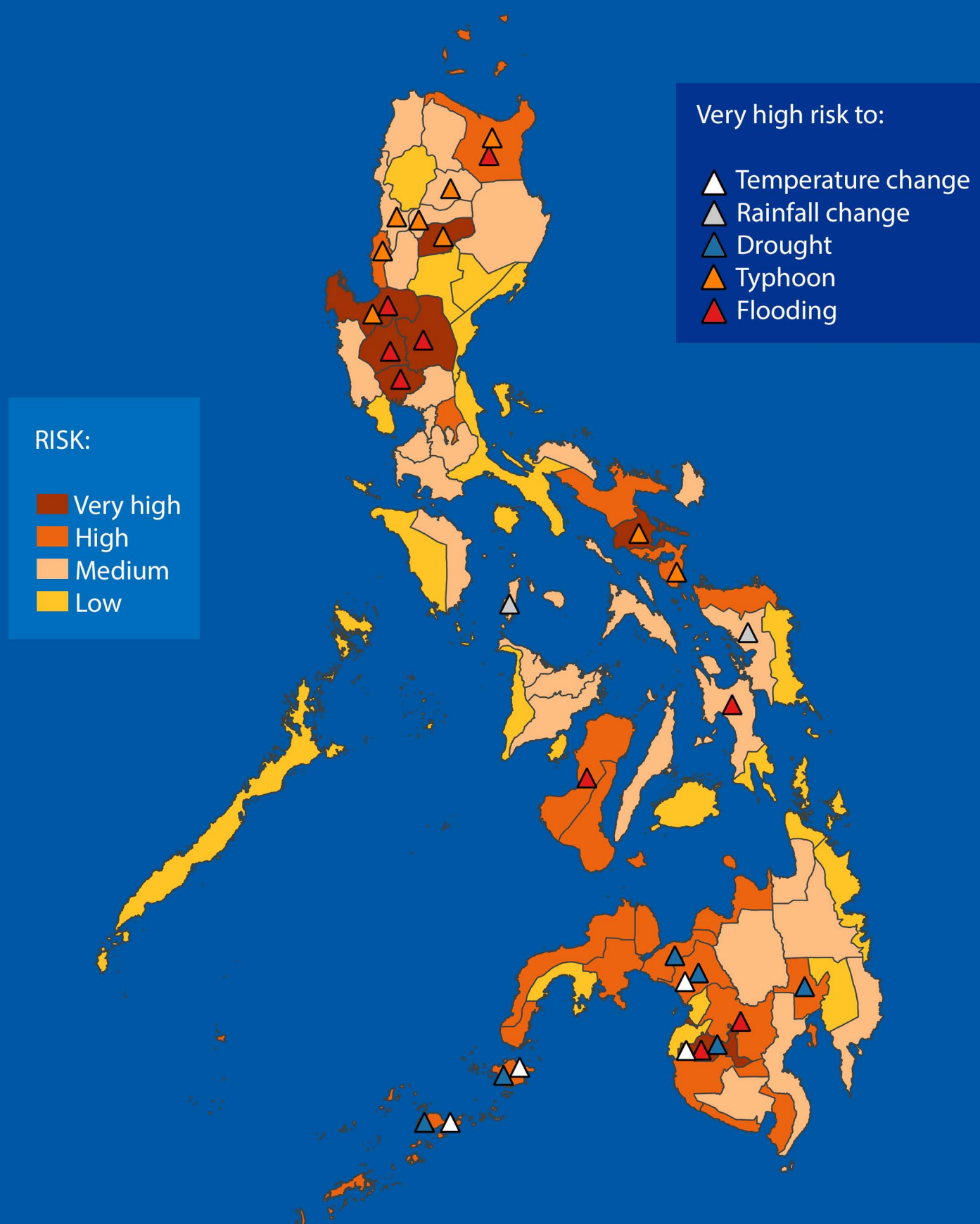


LOSS & DAMAGE PHILIPPINES

IMPACTS OF MAJOR CLIMATE-RELATED DISASTERS



RISK TO VARIOUS CLIMATE STRESSORS



ALARMING NUMBERS



Most exposed



Most at risk



Most affected by extreme weather events

This is Part 3 of a four-part infographic series on Loss and Damage. The next part will be strategies on how to reduce loss and damage.