

# LOSS & DAMAGE SOUTHEAST ASIA



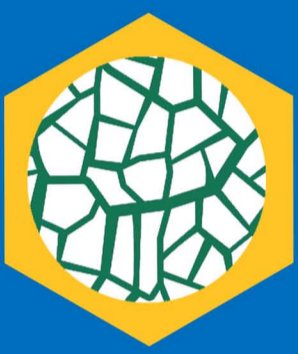
SOUTHEAST ASIA  
IS VULNERABLE TO  
CLIMATE CHANGE.

## WHY?



## UNDER THE THREATS OF

### Slow onset



Up to 20%  
more drought  
by 2020



Up to 25% less  
labor capacity  
due to heat stress  
by 2045



One meter  
sea level rise  
by 2099

### Rapid onset

Greatly  
decreases  
GDP



High impact on  
food security



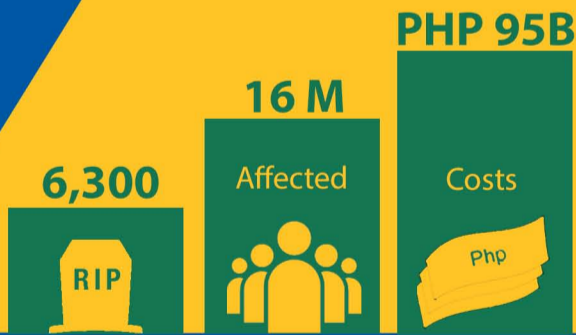
Most frequent  
and most costly  
(second to storms)



## NOTABLE DISASTERS



### 2013 Typhoon Haiyan



340 K

Displaced

80

RIP

### 2007 Jakarta Flood



## FAST FACTS

Second highest in the Global  
Climate Risk Index for 1995 - 2015



TOP THREE  
SEA countries  
MOST AT RISK  
for 2014

This is Part 2 of a four-part infographic series on Loss and Damage. The next part will be on loss and damage in the Philippines.