

APN Project # 2001 - 17
2002 - 03
2003 - 03

Global Change Impact Assessment for Himalayan Mountain Regions: Resource Management and Sustainable Development

FINAL REPORT



Asia Pacific Network for
Global Change Research



Global change SysTem for Analysis
Research and Training



Institute for Development
and Innovation

APN Project # 2001 - 17

2002 - 03

2003 - 03

**Global Change Impact Assessment
for Himalayan Mountain Regions:
Resource Management and
Sustainable Development**

FINAL REPORT

TABLE OF CONTENTS

| | |
|--|-----------|
| PROJECT INFORMATION | 4 |
| Project Title | 4 |
| Project No./Year | 4 |
| Principal Investigator | 4 |
| APN Funding and participating Countries..... | 4 |
| ABSTRACT | 5 |
| INTRODUCTION | 6 |
| ACTIVITIES CONDUCTED | 10 |
| Year one | 10 |
| Year Two | 10 |
| Year Three | 11 |
| OUTCOMES AND PRODUCTS | 12 |
| CONCLUSIONS | 24 |
| FUTURE DIRECTIONS | 26 |
| APPENDIX | 28 |
| Appendix A: Conferences/Symposia/Workshop | 28 |
| Appendix B/C: Agenda/Programme /Participants List..... | 30 |
| Funding Sources outside APN | 71 |
| Glossary of Terms | 72 |
| References | 73 |

Project Information

Project Title **Global Change Impact Assessment for Himalayan Mountain Region for Environmental Management and Sustainable Development**

Project No. (Year) **2001-17 (year 1),
2002-03 (year 2),
2003-03 (year 3)**

Principal Investigator

Name Prof. Dr. Kedar Lal Shrestha
Institute Institute for Development and Innovation
Address 21/85 Pimbahal, Lalitpur, Nepal
Telephone 977-1-5533028, 5537059
Email address klshrestha@wlink.com.np

APN Funding and Participating Countries

Funding US\$ 21,555 (year 1)
 US\$ 60,000 (year 2)
 US\$ 60,000 (year 3)

Duration Year 1: 2001 - 2003
 Year 2: 2002 - 2003
 Year 3: 2003 - 2004

Participating countries India
 Nepal
 Pakistan

Abstract

Considering the need and importance of a study on the impact of global changes on the unique systems in the Himalayan Mountain regions and their regional significance, this collaborative and multidisciplinary project has been undertaken with the participation of researchers from Nepal, India and Pakistan.

The research study focused primarily on the observed and potential climatic changes in the Himalayan mountain regions as well as their impacts on water resources, food security and livelihood of the mountain people. The ongoing and long term effects of the process of globalization were also briefly considered. Four representative basins draining different parts of Himalaya, one each from India and Nepal and two from Pakistan were chosen for the assessment of impacts.

The various activities carried out during the project period as well as some of the results of the research study on the ongoing and potential climatic and socio-economic changes in the regions and their observed and possible future impacts are briefly described in this report and some of the products providing further information on them are given in annexes.

APN has funded this project, directly in organizing of a scoping workshop in the first year and through START in carrying out project activities in the subsequent two years.

Introduction

The mountain ecosystem provides goods and services sustaining the life of almost half of the human population. In addition, the mountain ecosystem is vital to sustaining the earth system by providing the following environmental services:

- Cold source and carbon sink to respond to the threat of global warming;
- Sources of water as the origin of all major rivers in the world;
- Genetic resources to the rest of the world and future generations with its richest ever bio-diversity;
- Indigenous knowledge of best practice managing fragile mountain environment;
- Cultural and spiritual assets derived from the local geography and history;
- Recreational sites for people all over the world.

The United Nations have hence, recognizing the crucial role of the mountains in global ecology, declared the year 2002 as the International Year of the Mountain (IYM) for promoting the conservation of mountain ecosystem and sustainable development in the mountain regions. Having received a good response of the celebration of IYM and the need to further reinforce the commitment, United Nations General Assembly has designated 11 December, from 2003 onwards, as 'International Mountain Day'. International Mountain Day thus provides a unique opportunity to move mountain issues higher on the global agenda and also help to serve as a springboard and catalyst for long-term, sustained and concrete action for the sustainable development of the mountain areas and the mountain people.

The Himalayan Mountain range, the youngest, largest and highest on earth and extending east-west in over 2,400 km long arch in the north of South Asia, are home for over 100 million people with some of them living at very high altitudes. The range triggers orographic precipitation and influences the region's weather including the South Asian Monsoon; stores water as snow and ice; acts as source of large rivers such as Indus, Ganges and Brahmaputra and thus constitutes the "water tower" for almost one billion people living downstream in the Indo-Gangetic plains. Moreover, due to their unique position and physical features, they act as a storehouse of valuable biodiversity resources and hold a mosaic of age-old human cultural diversity.

However, because of their young and fragile nature coupled with sharp gradients, the Himalayan Mountains are particularly vulnerable to climate change and variability. Further, due to the rapidly growing population pressure, natural and socio-economic systems in these mountain regions are at risk, in particular regarding the impacts of global change and globalization. The rapid change of the ecosystem, driven by both natural and anthropogenic determinants poses unprecedented threat not only to the livelihood of the local people, wildlife and culture, but also to the billions living in the downstream and ultimately to the global environment. The inherited environmental fragility and social economic

vulnerability have thus put the Himalayan ecosystem on the top of the World Summit on Sustainable Development (WSSD) and Bishkek Global Mountain Summit (BGMS) agenda.

Due to the rugged terrain and the thus posed strong barriers to transportation, communication, trade and political integration, the mountain regions traditionally used to be well known for their pristine ecology. And mountain people have survived and flourished in the past exhibiting resilience stemming from their sustainable use of environmental resources. But with the technological innovations in communication and transportation system combined with linkages to expanding market economy, use-intensification and over exploitation of environmental resources are leading to high rates of environmental changes in the fragile ecosystem and thus turning the mountain regions into 'critical regions'. Consequently, the traditional resilience is being rapidly breached leading to growing dependence on external inputs and over exploitation of selective resources threatening their sustainability. Thus the landscapes and human groups in the mountain regions are being simultaneously affected by environmental and socio-economic threats and perturbations leading to 'critical stage' as a result of global changes and globalization.

While the Himalayan Mountains are particularly susceptible to impacts of a rapidly changing climate often coupled with anthropogenic alteration of mountain landscapes due to population changes and economic activities, the region's politic and economic marginalization creates added vulnerability due to a reduced capacity to adapt to these changes. Research on global change issues has generally focused on uncertainties in climate projections and calculation of mitigation costs. The fragility of mountain ecosystems itself represent a considerable challenge to sustainable development due to the fact that the impacts of unsustainable development are more rapid, heavier and more difficult to correct than in other ecosystems. The most pressing issues associated with global change, furthermore, involve the potential effects on ecosystems and resources as well as the societies that depend on them. As many of these effects are interactive with some specific thresholds, vulnerabilities and adaptations, the understanding of response to global change is crucial especially for the sustainable development of mountain regions.

The identification and understanding of key ecological and socio-economic parameters of the mountain regions, including their sensitivities and vulnerabilities under global changes and cumulative changes due to ongoing human interventions have all become crucial for planning and policy making for environmental management and sustainable development of the mountain regions as well as the downstream areas. Furthermore, as food security and water availability are obviously the key elements in all the sustainable mountain development strategies, they naturally rank high in the priority list.

Meanwhile the mountain regions due to their steep altitudinal gradients coupled with sharp contrasts between areas of greater or lesser direct human impact also provide a unique and important setting within which to examine the interplay of

global climate change and globalization as well as to detect and analyze global change process.

A collaborative project on ‘Global Change Impact Assessment for the Himalayan Mountain Regions’ was developed with the aim at an assessment of the impacts of and vulnerability to global change on food security, water resources and livelihood of people in the Himalayan Mountain regions. The APN supported for a Scoping Workshop in 2001 for its improvement and finalization.

This 2-year collaborative and multidisciplinary APN project described here is thus based upon recommendations and project proposal finalized at the APN Scoping Workshop held in Kathmandu, Nepal during 2-5 October 2001. The earlier Meetings of the South Asian Committee of START (SASCOM) held in Dhaka, Bangladesh in 2000 and in Kathmandu, Nepal in 2001 had also recommended for such a study for the Himalayan Mountain regions. The objectives of the project are as follows:

Objectives:

- To assess the relative importance of global change impacts on the Himalayan mountain environments in order to prioritize monitoring efforts and to anticipate consequences with respect to food security and water resources including transfer of resources between uplands and lowlands;
- Assessment of the vulnerability to and impacts of global change on food security and water resources, including transfer of resources between uplands and lowlands;
- To assess the vulnerability of mountain people to global change and to investigate the factors that promote resilience of these groups in the face of multiple and interacting environmental stresses; and
- To synthesize and aggregate national assessments and other pertinent studies to inform on the scientific basis the policymaking processes at local to regional scales regarding global change impacts on food security and water resources in the Himalayan Mountains as well as response strategies for coping/adapting with the changes.

Vulnerability concepts, which encompass both biophysical and socio-economic aspects of risks, provided a framework for integrating assessments of the impacts of global environmental change with the impacts of the ongoing economic, political and cultural changes associated with globalization.

For conducting the project in collaboration with the researchers from India, Nepal and Pakistan, the worked out phase-wise activity framework is presented below:

| <i>First phase (year one: 2002 - 2003)</i> | <i>Second Phase (year two: 2003 - 2004)</i> |
|--|--|
| <ul style="list-style-type: none"> ■ Collection, compilation and collation of data sets; Start-up Workshop for developing protocols for cross-site comparisons; ■ Qualitative assessment and predictions/scenarios of interactions and sensitivities; highlight gaps in knowledge and data; assessment of relative contribution of different parameters in driving change; ■ Create common web site for project; ■ Synthesis activity; and ■ Project review meeting at end of first phase and developing detailed work plan for second phase. | <ul style="list-style-type: none"> ■ Expanding transect in the second year if necessary with suitable site selection as guided by gap analysis in the first year; ■ Make database more quantitative through various measures including field surveys; ■ Model interactions and vulnerability assessment scenarios; ■ Identify within and between watersheds, villages and groups that have greater water and food security; qualitative analysis of institutional and other strengths that provide resilience; and ■ Workshop/Seminar for finalizing and disseminating the research findings among researchers, stakeholders and policy makers. |

Activities Conducted

Year one

Outline of activities conducted

In the Year One, a Scoping Workshop supported directly by APN was held in Kathmandu on 2-5 October 2001 with the participation of experts from India, Nepal and Pakistan as well as two representatives from the MRI and one from the APN for deliberating and discussing as well as finalizing the project proposal on Global Change Impact Assessment for the Himalayan Mountain Regions for Environmental Management and Sustainable Development. The Workshop was preceded by an initial meeting of representatives from India, Nepal and Pakistan on 21-22 July 2001 for working out the framework and logistics for the Scoping Workshop. The proceeding of the workshop has been published as another output of the year-one activity.

Year Two

Outline of activities conducted

During the second year (2002/3) of the project, collection, collation and analysis of all relevant available data, information and recent experience on climate, climate variations and extreme events over the Himalayan regions together with initial assessments of vulnerability of and impact on water resource and agro-ecosystem and the mountain people were carried out by the three research teams for their respective countries.

At the very beginning of the Project, a preparatory/start-up workshop was organized in Kathmandu from 20 - 22 June 2002 with the participation of all the key researchers from all the three participating countries for finalizing the work plan and developing protocols for cross-site comparisons. The Start-up meeting discussed and came up with a common format and tools for the collection and analysis of relevant data and information.

The data collection and analysis activities covered the Himalayan mountain regions in the respective participating countries in general and focused in particular on the three selected watersheds, namely,

- Alaknanda Watershed in India
- Kaligandaki Basin in Nepal, and
- Siran Valley in Pakistan.

The project activities included:

- 1) Country reviews of recent climate variability and extreme events; water availability and agricultural practices and assessment of their sensitivities to climate change and variability;
- 2) Assessment of socio-economic vulnerabilities to climate change and variability as well as the process of globalisation;
- 3) Synthesis and aggregation of country studies highlighting the regional sensitivity and vulnerability to global change;

- 4) Developing common approach and sharing of research results and experiences within the involved group of researchers from the participating countries.
- 5) Publication of the Country Studies

A year-End Workshop was organised in Kathmandu on 10 - 12 January 2003 wherein all the key researchers from the three countries participated. In addition to exchanging their results and experiences, they discussed and worked out a programme of activities for the next year as well as a tentative framework for the final report.

Year Three

Outline of activities conducted

In the third year (2003-2004), project work focused on global change related vulnerability analysis and integrated impact assessment with respect to food security and water resources, including highland-lowland transfer of resources in the Himalayan Mountain regions. In order to capture the impact in the far western region of the Himalayas, where the effect of the Southeast Monsoon is least, an additional site viz. Hunza Watershed in Pakistan was also included in the study this year. Thus, the studied watersheds now included:

- Alaknanda in India;
- Kali-Gandaki in Nepal; and
- Siran and Hunza in Pakistan.

Studies focused on the identification of crucial factors that need close monitoring to reduce vulnerability of Himalayan water resources, agricultural systems and mountain peoples' livelihoods to global change. Activities conducted during the project period included the following:

1. Database generated during the first year was improved by collecting more data from concerned agencies, as well as through other measures including field studies and interviews with key-actors in the selected Himalayan river basins in the participating countries.
2. Earlier works on Himalayan glaciers were reviewed. All those indicated clearly a general trend of recession of glaciers in the region at rapid rates.
3. Field surveys, together with a number of participatory rapid appraisals (PRA's), were conducted at three altitudinal transects in each of the four selected watersheds to ascertain people's perceptions on climate change and globalization as well as their vulnerabilities and coping mechanisms.
4. The field survey data were analyzed using suitable tools including the use of the SPSS package. The extracted data and information include altitudinal variations regarding the impacts of climatic extreme events on water availability, food security and peoples' livelihood together with their resilience capacity and coping mechanisms. Those also include information

on peoples' perception about global change and the perceived requirements of adaptation/mitigation measures.

5. Hadley Centre RCM2 data, obtained with the help of the Indian Institute of Tropical Meteorology (IITM), for both controlled as well as potential GHG emission conditions on daily temperature, precipitation and relative humidity for selected grid points in the selected study areas over a period from 2041 to 2060 were utilized to get a gross view of the envisaged change in the Himalayan mountain region half a decade later. Monthly mean data for intermediate time slices for 2010s and 2020s obtained later were used to derive short term impacts. The model run data for 1990 were used together with the observed data for model validation.
6. For the Kaligandaki basin, the Tank and DSSAT models were used to study the impacts on water resources and agriculture, respectively. Due to unavailability of necessary and adequate data, the same could not be carried out for other selected watersheds. However general pictures were derived in suitable form for them with whatever data and information that could become available.
7. A very simple Ecological Health model has also been tried to develop socio-economic vulnerability and impact assessment scenarios for the Kaligandaki basin.
8. Model exercises for the other selected watersheds could not be carried out in the absence of necessary hydro-meteorological data. Inferences on vulnerability of water resource, food security and livelihood of mountain people were based on field survey data and HadRM2 climate scenarios.

Outcomes and Products

Some of the Research Results

Selected Basins

In the process of assessing the impacts of global change in particular on the water resources and food security in the mountains as well as the livelihood of the people living in the region, three selected watersheds in the three participating countries viz. Kali Gandaki basin (28° N, 83° E) in Nepal, Alaknada basin (30° N, 79° E) in India and Siran basin (34° N, 73° E) and Hunza basin (36°N, 75°E) in Pakistan, were chosen as representative mountain regions and basins draining different parts of the Himalaya. Some of the results of the research study to ascertain the ongoing and potential climatic and socio-economic changes in the regions and their observed and possible future impacts are presented and discussed.

Observed Climate Change and Variability and their Impacts

There are clear indications of climate change signature in the Himalayan Mountainous region of the sub-continent. There are perceptible trends of changes in the rainfall and temperature of varying magnitudes in the past three decades in the different study areas that are evident both from the analysis of available earlier meteorological data and also from the field survey carried out to ascertain people's perception of such changes.

All the available data on temperature and precipitation from the meteorological stations in and around the selected watersheds were collected and analyzed.

Temperature Change

A trend analysis on the available temperature data indicated the ambient temperature in the selected watersheds to be increasing at a rate ranging from 0.02 – 0.04 °C/year. The temperature rise was found higher in higher altitudes. The observed changes in the temperature at the various watersheds during the given intervals are tabulated below. It may be noted that a negative trend ranging from – 0.008 to -0.06 °C/year have been reported in some earlier study in the eastern Himalaya. This marked difference between the eastern and western Himalaya may well be due to more cloud coverage in the eastern regions that have much higher precipitation as compared to western Himalaya.

Glacier Retreats

A clear consequence and important indicator of this warming trend is apparently the observed retreat of Himalayan glaciers, which highlights the impact of global climate change at high elevations and the consequences for lowland agriculture, hydroelectric power generation, ecotourism and the society in general. T All the available records have clearly indicated that glaciers in the Himalayan region are retreating at a rate ranging from 5 to 30 meters per year and the amount and pattern of snowfall is also apparently changing in the region.

The change in snowmelt as well as the biological community covering the mountain watershed equally affect water storage and water yield to the downstream regions as well. The increasing glacier retreat will cause dual effect on river hydrology. Large variations in river peak flows will increase quantity of glaciofluvial sediments transport due to excessive melting. It can cause large scale damage to downstream river valley schemes, agriculture and water supply. In addition, there are increasing threats due to the formation and outbursting of glacial lakes in the high altitudes causing Glacial Lake Outburst Floods (GLOFs).

Analyzed Changes in Temperature

| Country | Location | Year | Temp. | Observed Variation °C / year |
|----------|----------------------|-------------------------|-------------------|------------------------------|
| Nepal | Kali Gandaki | 1970s-1990s | T _{max} | 0.0264 |
| | | | T _{min} | 0.0239 |
| | | | T _{mean} | 0.0246 |
| Nepal | Nepal | 1971-1994 | T _{max} | 0.06-0.12 |
| | | | | 0.03 |
| Pakistan | Siran | 1961-200 | T _{max} | 0.017 |
| | | | T _{min} | 0.005 |
| | Pakistan | 1931-1960/ 1960-1990 | T _{max} | 0.026-0.04 |
| | | | T _{min} | 0.016-0.03 |
| India | Alaknanda | 1994-2002 | T _{mean} | 0.151 |
| | Nainital | 1987-1996 | T _{mean} | 0.0276 |
| | North-East Himalaya* | 1969-1990 | T _{mean} | -0.008 to -0.06 |

- As reported in some other study

Precipitation Change

Precipitation change and extreme events do not show any specific pattern and seem to change from place to place. But a decline in snowfall was reported by the respondents during the field survey in all the selected basins. The Table below gives a general trend of precipitation change in the selected Himalayan regions.

For Alaknanda, analysis of past rainfall data for the trend revealed that the rainfall of lower and middle transects was decreasing. The perception of local people also confirmed climate change in the form of reduction in snowfall and variations in rainfall pattern along all three transects. Lower transect experiencing moisture deficit and draught conditions in some years whereas more flood conditions in monsoon. Most populated Middle Transect showed largest decline -34.98 mm/year. If the same trend continues in the future, more chances of drought are expected.

In case of Kaligandaki basin, in general, an increasing trend of precipitation has been noted while a decadal pattern of change in precipitation extremes was observed with a lower extremes in 70s and distinctive higher extremes in 90s and in between in the 80s.

In Pakistan eight out of nine stations in and around Hunza valley show increasing trend in monsoon rains, although, the contribution of monsoon rains to the total precipitation is not large. The winter rains have dropped but not significantly. In Siran basin, both monsoon and winter rains on the average have increased slightly, while Oct-Nov which is already the driest months of the year appear to have become drier.

Changes in Precipitation

| Country | Location | Year | Variation in mm/yr or in % |
|----------|--------------|-----------|-------------------------------|
| Nepal | Kali Gandaki | 1971-2000 | 1.6-31.0 |
| Pakistan | Siran Valley | 1981-1998 | 40% |
| | Murree | 1961-1999 | 25% |
| | Sub-tropical | 1971-2000 | -20% |
| India | Nainital | 1965-2001 | 15% |

Change in Hydrology

As a result of change in temperature and precipitation and other anthropogenic changes, the hydrology of the basins is also found changing. In Pakistan and India, there is a general increase in trend in the runoff in the studied areas. Snow fed rivers especially are found to have increased dry season flow whereas non-snow fed rivers have decreasing trend during dry season. The trends of hydrological change in the region are shown in the Table below.

In case of Alaknanda river, the maximum flow (during monsoon) and the minimum flow (during winter) showed increasing trend, while minimum flow indicated smaller variations. Also in case of Mandakini river, the main tributary of the Alaknanda, an increasing trend was observed in the maximum and minimum flow and the variation in the flow was higher than those in Alaknanda.

Changes in Hydrology

| Country | Location | Year | Variation million m ³ /year |
|----------|----------------|-----------|---|
| Nepal | Kali Gandaki | 1964-2000 | 142 (1%) |
| Pakistan | Siran | 1968-2000 | 5.8 (1%) |
| | Indus (Pratap) | 1968-2000 | 240 (13%) |
| | Indus (Qila) | 1968-2000 | 120 (5%) |
| India | Alaknanda | 1980-2000 | 1767 (2.8%) |

Impacts on Water resources

The western parts of Himalaya in particular are found facing water shortage during winter dry period. The observed trend indicates that the drought conditions are getting worst. Similarly the flood incidences during the monsoon periods are showing increasing trends. Thus the impacts of climate change on water resources are aggravating the present condition by making the dry period drier and wet period wetter. With the increase in population and intense farming, the demand for water will increase in the mountain areas thus reducing the supply to the down stream areas. Incidence of soil erosion, land slides, etc. will increase with increase in frequency and intensity of extreme climate events and land use changes. Conventional planning of water resource for hydropower generation, irrigation, industrial use etc. based on past hydrological trends are no longer going to be valid in the context of global change.

While Himalayan River System and Himalayan Waters clearly depicts the role of the mighty mountains in regulating South Asia's climate and the region's water resource base, studies have revealed that global climate change can have a profound effect on the Himalayan water resource base. Sustainable development of the region demands rational use of this resource. At present, the models to forecast resources and define their optimal use are all defined on a national scale. Nevertheless, it should be acknowledged that such an approach should be complemented by a regional approach, since both water forecast and regional water consumption has transboundary, regional aspects and teleconnections to more global aspects such as global change. Such a regional approach that does not exist so far demands a concerted scientific regional integrated endeavors initiated through an enhanced and improved flow of information on Himalayan water resource and management issues.

Impacts on Food Security

All the mountain areas, in particular the mid and high mountains, are in general found food deficit areas. Their dependency on food supply from the plains have been found increasing further due to the change in population and food habits, the increased linkages with external markets and economy and the lack of appropriate technology.

Due to climate change, higher temperature at the lower altitudes beyond the growth limits of agricultural crops will lead to reduced production and productivity. As the elevation limits will move higher than the present 3,000 m, thus causing spatial shift of cultivated areas to higher elevation, and introduction of new crops in the high mountains and increase in cultivated area and crop productivity have already been noticed in the high mountains of the Kaligandaki basin. But meanwhile, incidence of pest and disease attack on crops are found to increase damage to crops, especially to fruit trees, on account of extreme climatic events.

Indigenous knowledge and traditional practices in the agricultural systems have been in existence in the Himalayan region for millennia. Farmers with their practical knowledge had developed several production systems suited to marginal

and fragile mountain environments. The eco-friendly agriculture and sustainable soil management are practiced even in such harsh environments through terracing, composting, mulching, mixed cropping, mixed farming, etc. Traditional farming practices have been significantly contributing in maintaining a balance in the nature by promoting interdependence of agro-horticultural crops, forestry, animal husbandry and medicinal and aromatic plants in the mountains. They still have intrinsic value in the agricultural system of the region. Farming communities of the Himalayan region attach great value to the forest ecosystem as well as to the integration of livestock into the mountain farming system. The communities in the Himalayan mountain regions have thus been practicing traditional farming systems for harnessing ecological potential of land and conserving natural resources for millennia.

However, much to the dismay of these mountain farmers, the protection and promotion of such practices are not a national priority of the countries in the region. In the national plans and policies, they are, more often than not, ignored. In addition, in recent years, due to globalization and the World Trade Organization (WTO) system, new challenges are surfacing. Different WTO agreements deprive farmers from enjoying their right to exercise traditional farming practices. Countries in the region have not been able to devise appropriate policy instruments and legal mechanisms that protect and promote traditional farming practices. Such a policy and legal constraints has severely limited farmers' freedom and their ability to practice traditional farming systems, thereby directly affecting their rights and livelihood options.

To increase the agricultural production and productivity for economic gains and for feeding the increasing population, modern agricultural practices and systems are now being introduced in most of the areas. But monoculture agricultural practices and excessive use of chemical fertilizers and pesticides in the tea gardening in the eastern Himalayas for instance are causing problems of soil degradation and water pollution.

Meanwhile, as the subsistence agriculture in the mountains has not been able to meet the food requirements as well as other necessities of the households, at least one or more members in general are found to go to urban or foreign countries to work as wage labourer to supplement the household income. The current insurgency problems in the mountain regions have further aggravated the situation and there are greater exoduses of youths from the mountain areas to foreign countries. Income from remittances and wage labor and service has become the chief source of income and much of this is spent on to purchase of foodstuff and daily necessities.

Comparative advantage accrued from the overseas job, wage labor and service has caused labor shortage and decline in investment in agriculture and livestock sector in all transects, but most apparently in middle and high mountains. As a result, agricultural lands in the mountain slopes are getting abandoned that in turn are accelerating the process of soil erosion and landslides.

Perceived Global Change Impacts: Assessment of vulnerabilities and coping mechanisms

Field surveys and PRAs conducted in all the selected watersheds have revealed the notable decrease in amount and duration of snowfall in the regions where there used to be significant snowfall a few decades earlier. Likewise, increase in incidences of extreme climatic events like floods and droughts were reported invariably from the various survey sites. The mid-mountains were found more vulnerable as compared to low- and high-mountains. The coping mechanisms that relied on traditional systems are getting weakened as the social systems undergo rapid changes.

The rapidly growing population and greater physical, administrative and market integration of mountain and upland agriculture with mainstream systems have fundamentally altered local resource management practices leading to resource use intensification and overexploitation. Thus the landscapes and communities in the mountain regions are being simultaneously affected by environmental and socio-economic threats and perturbations.

All the mid- and high mountains are food deficit and rely on food supplied from the down-hill planes. Changes in food habits have made them more dependent on the downhill supplies. The mountain farming system is in general very complex and diverse and characterized by strong linkages between the three spheres of crop production, livestock and forest. Crop production cover in general 3-9 months of the annual household food demand and with little marketable surplus. Each household, for domestic needs and for some extra income, keeps small numbers of livestock. Certain section of people in highlands in proximity to pastureland still engages in transhumance. Transhumance is more prevalent in the western Himalayan regions. Forests are utilized for domestic, agricultural and commercial purposes. Off-farm employment opportunities are very limited locally. On an average, most of the households have some of their members engaged in temporal migration. A high rate of labour migration indicates the low local income opportunities as well as labour remittances being one of the important sources of income of local households. The marginal and rain fed crop fields are being abandoned by the people as further fragmentation of landholdings is not possible and as young people migrate out from the region for job elsewhere. Such incidences are now becoming more common. The abandoned fields have in turn become hot spots of land denudation, degradation and landslides.

Projected Potential Impacts

The fact that global change is projected to occur simultaneously and in concert with changes in population, technology, economics, and other environmental and social changes clearly adds to the complexity of the impact assessment and the choice of appropriate responses. The characteristics of sub regions and sectors of the Himalayan Mountain Regions suggest that neither the impacts of global change nor the response options will be uniform.

While the development of regional climate model development for the Himalayan mountains is itself a big challenge and will require greater regional efforts, the effects of climate change on the South Asian monsoon and the ENSO

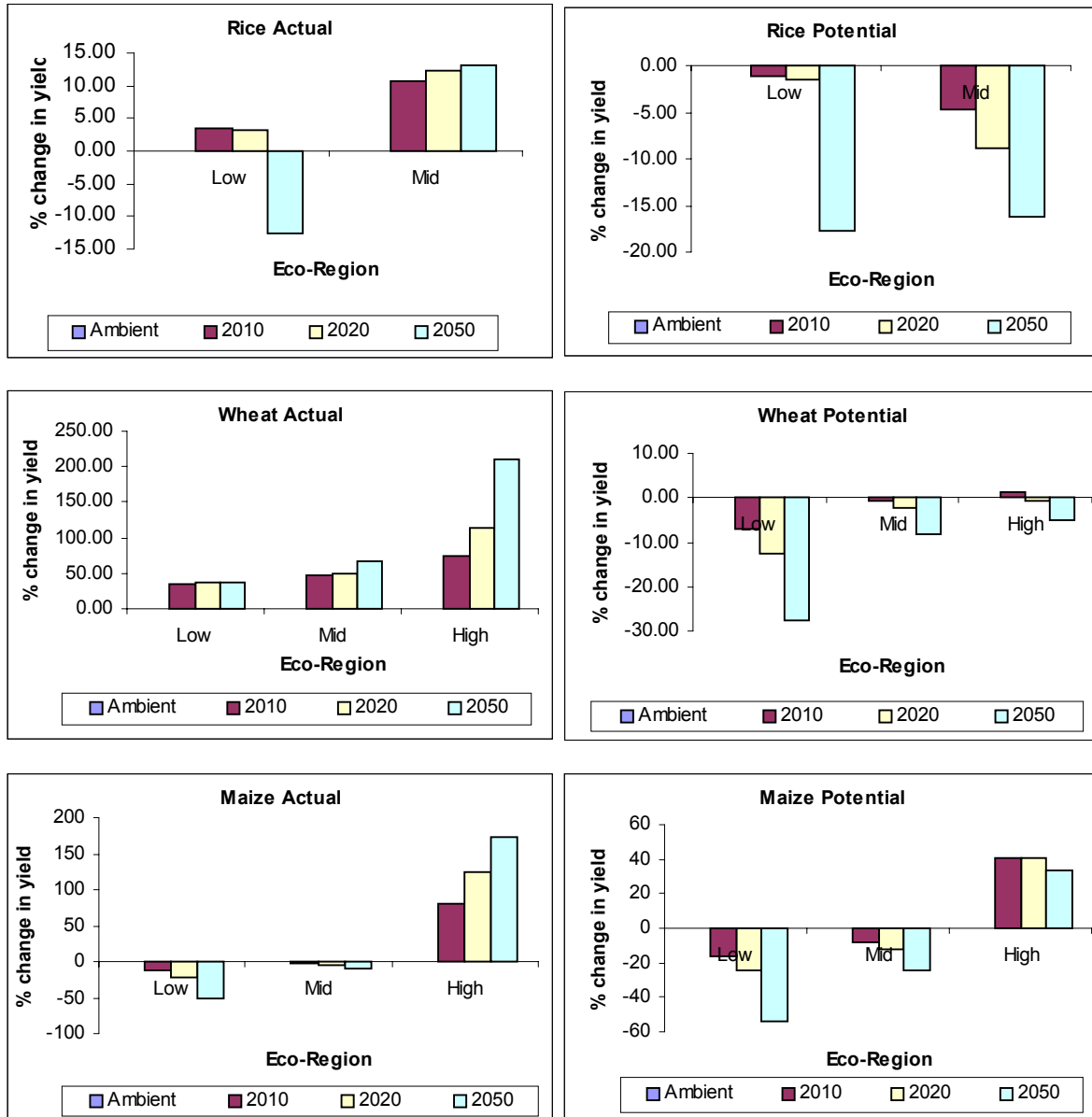
phenomenon, for instance, are among the major uncertainties in the modelling of the hydrological cycle. Similarly, projections of agricultural crop yields are uncertain, not only because of the uncertainty in the hydrological cycle but also because of the potential positive effects of CO₂ and production practices. The major challenges in research in the Himalayan Mountain regions are therefore to better understand, describe and model the impacts of the ongoing global change processes in the region, their complex interrelations and interaction and to use the required integrated models (model systems) after their verification and validation with reference to recent and past observations and monitoring programmes for scenario-based simulations into the future. As a step towards that endeavour, available data for the selected watersheds were utilised to project potential impacts of climate change on the chosen sectors and some of the results are briefly described below.

Future climate scenarios were generated by using the HadRM2 data for control (CTL) runs representing 1990s and for projected GHG emissions perturbed runs for the years 2041 to 2060. The daily rainfall and temperature data for different grid points are derived from the model, which has been used for trends and variability analysis. Monthly mean data for intermediate time slices for 2010s and 2020s were used to derive short term impacts. The model run data for 1990 were used together with the observed data for model validation.

With reference to the year 1990, the projected temperature rise for the year 2050 in the Kaligandaki basin for instance ranges from 3°C to 6°C, the rise in temperature being more in the lower regions than those in the higher regions. Similarly, precipitation in the basin is projected to increase between 160 mm to 1200 mm annually with highest increase in the middle mountain regions. Projected temperature and precipitation changes for the other selected basins are also available. However, validation of the model indicates that uncertainties in the projected figures are in some cases quite high that demand improvement in the model and checking with other model results..

For studying the impact of climate change on water resources, the effect of climate change on the streamflows was simulated using tank model. For the Kaligandaki basin, it appears that the flood magnitude and frequency are likely to increase and low flows are likely to decrease. Thus the impact of climate change is going to pose a challenge in incorporating the uncertainty into future water resources planning and management.

Similarly, validated crop models embedded in ICSA based DSSAT were used for scenario based impact analysis for important crops for the projected temperature and CO₂ rises. A graphical presentation of the percentage changes in yield for a few crops is shown below. The marked negative impacts on the various important crops in the low mountains are significant and clearly call for careful attentions. While the productivity in the mid mountains are projected to increase, the likely effects of increased loss due to pests and diseases due to warmer climate in those altitudes will need due attention. The opportunities for increased production and productivity of new crops in the high mountains would however be offset by the limited extent and slope of the available land area.



Yearwise Outcomes

Yearwise Out comes

The yearwise outcomes of the project activities are briefly outlined below

Year one

- 1) Finalization of the Project Proposal on “Global Change Impact Assessment for Himalayan Mountain Regions for Environmental Management and Sustainable Development” for submission to APN

- 2) Publication of the Proceeding of the Scoping Workshop entitled "Global Change and Himalayan Mountains"

Year Two

- 1) Generation of an integrated regional database on science and society in the selected Himalayan regions relevant to global change impact assessment studies.
- 2) Creation of common web site www.idi.org.np for the dissemination of project results.
- 3) Training in 2002 of one research team member in AIACC Trieste workshop and initiation of local capacity building exercises by involving post-graduate students in the research studies.
- 4) In an intensive 3-day inception workshop held in Kathmandu, Nepal in June 2002, country team members made background presentations, prepared detailed work plans and timelines for year one activities and finalized outline of the country studies and data formats.
- 5) Country studies on recent climate variability and their impacts on water and agriculture as well as global change associated socio-economic impacts with adaptive responses (spontaneous and planned) in country specific sections of Himalaya and in the selected watersheds.
- 6) A regional background paper and a synthesis report based on the country studies.
- 7) An intensive 3-day year-end workshop was held in January 2003 in Kathmandu, Nepal wherein keynote background papers as well as results of country level studies and the draft synthesis report were presented and discussed.
- 8) Keynote papers and focused national studies were compiled and published.

Year Three

1. A general perspective on the trends of climatic, as well as socio-economic changes in the Himalayan mountain regions.
2. A general perspective of the retreating Himalayan glaciers and their consequences in terms of increasing threats of Glacial Lake Outburst Floods (GLOFs), as well as in terms of changes in the flow of snow fed rivers during the dry seasons, and their impacts on irrigation and hydropower development schemes.
3. Derived trends of changes of meteorological, hydrological, food provision, and socio-economic parameters at the selected representative watersheds in the different regions of the Himalayas.
4. Country reports including field survey results on the observed impacts of global change including globalization on water resources, food security and livelihood of mountain people as well as the current coping mechanisms.

5. Identification of villages and groups with greater water and food security as well as institutional and other strengths that provide resilience.
6. Country level workshops in Nepal and Pakistan with mountain stakeholders and policy-makers.
7. An intensive workshop held in Kathmandu on 16-20 December 2003 (in conjunction with the APN workshop on Water Resources in South Asia) to discuss research findings as well as plan a strategy for bringing the project work to a logical conclusion.
8. Press meeting with national newspapers, press agencies and the electronic media convened on 19 December 2003 for disseminating APN project research.
9. A paper based on the synthesis report has been sent to the Journal on Global Environmental Research for publication.
10. Final report being published and disseminated through the Internet. Relevant papers based on the research to be sent for publication in peer-reviewed journals.
11. A *no cost extension* of the project period for six months has been requested and granted for the identification of model-based projected impacts through the synthesis of all collected information and data, and thus to bring the project to a logical conclusion. Tasks in this timeframe included:
 - Validation of the data as well as the development of short-term scenarios (HadRCM2 data for the selected grid points covering the periods from 1980 to 2030 have been obtained through IITM.)
 - Using RCM data and assuming certain development paths, a few scenarios for global change impacts have been developed and the policy and research implications under the various scenarios for environment management and sustainable development in the Himalayan mountain regions are ascertained and disseminated among the policy makers and researchers respectively.

Documents and CDs

| S. No. | Title | Document | CD |
|--------|--|----------|----|
| 1 | Global Change and Himalayan Mountains: Proceedings of Scoping Workshop, 2 – 5 October 2001 | √ | |
| 2 | Global Change Impact Assessment in the Himalayan Mountain Regions: Country Studies on Ecosystem Conditions and Trends a. India – A Case Study in Alaknanda Watershed b. Nepal – A Case Study in Kaligandaki Basin c. Pakistan – A Case Study in Siran and Hunza Valley | * | √ |
| 3 | Global Change Impact Assessment in Himalayan Mountain Regions: Proceedings of the First Year-End Seminar / Workshop, 10 – 12 JANUARY 2003 | √ | √ |
| 4 | Micro Level Field Surveys in the Selected Himalayan Mountain Regions on Global Change Impact Assessment | * | √ |
| 5 | Global Change Impact Assessment in the Himalayan Mountain Regions: Scenarios, Response and Policy Implications | * | √ |
| 6 | Proceedings of the Second Year-End Seminar/ Workshop on Global Change Impact Assessment in Himalayan Mountain Regions, 16 – 20 December 2003 | * | √ |
| 7 | Impacts of Global Change in Himalayan Mountains – Tools, Observations and Synthesis | * | √ |
| 8 | National Workshop in Nepal on Global Change Impact assessment in Kaligandaki Watershed: Proceedings of the Workshop held in Kathmandu on 1 November 2003 | * | √ |
| 9 | National Workshop in Pakistan on Global Change Impact Assessment in Siran And Hunza Valley : Proceedings of the Workshop held in Islamabad on 7 August 2004 | | √ |
| 10 | Proceedings of the Initial Meeting held in Kathmandu on 21 – 22 July 2001 on Organizing a Scoping Workshop on Global Change Impact Assessment for Himalayan Mountain Regions | | |
| 11 | Proceedings of the Preparatory Workshop on Global Change Impact Assessment for Himalayan Mountain Regions held in Kathmandu on 20 – 22 June 2002 | | |

√ - In the enclosed CD

* - On the process of publication

Conclusions

Data gaps, research imperatives and institutional support

Expansion of meteorological and hydrological network

Meteorological stations and their network in the Himalayan mountain region need to be expanded and their capacity and efficiency enhanced for monitoring temperature, rainfall, snowfall and other meteorological parameters, the crucial indicators of the global climate change. Similarly a closer network of hydrological stations for regular monitoring of water and sediment discharge, and water quality need to be extended covering all the major river basins. All these are so essential for projecting future scenario and associated risk and vulnerabilities due to climate change and variability.

More research to reduce knowledge gaps

Although this study, within its limited scope and constraints, has tried to cover on a sectoral basis the wide spectrum of global change impact assessment, associated vulnerabilities and adaptation in the Himalayan mountain regions; more focused and in depth scientific researches on global change impact on the mountain system need to be promoted through an integrated regional approach.

Institutional arrangement and support for promoting global change researches

An institutional arrangement and support system both at the country and regional levels may be developed to facilitate greater understanding of the emerging impacts of climate change and globalization processes on mountain areas and communities through information exchange and dissemination and systematic researches. This could also aim to bridge the gap between such scientific findings and policy making process towards minimizing the associated risk and vulnerabilities.

Institutional efforts for enhancing resilience and coping capacity

The notable development in service and infrastructures in the mountain areas by the government and the growth of NGOs and local institutions in the last few decades have to some extent improved the quality of life, reduced the physical hardships, and increased the resilience and the coping capacity of the people living therein against the mountain adversities. But they are still inadequate and less capable to addresses the needs and aspirations of the mountain people and to cope with the risks associated with global change and globalization.

Monitoring

Snow cover and glacier monitoring

A regular monitoring of snow covered areas, glaciers and glacial lakes, land use and land cover change based on remote sensing combined with field verifications requires to be initiated at both the national and regional levels.

River flow, sediment flux and river water quality monitoring

A regular monitoring of river flow, sediment flux and river water quality would be valuable not only for water resource planning but also provide valuable inputs to assess ongoing and potential future changes.

Cropwise agricultural yields at various altitudes

Cropwise agricultural yields at various altitudes need to be monitored for assessing changes due to global warming and taking necessary adaptive measures.

Enhancing Resilience and strengthening Coping Capacity

Integration of climate change considerations in sustainable development planning

Approaches toward exploiting synergies between environmental policies and key national socio-economic objectives like growth and equity could help mitigate and reduce vulnerability to climate change, as well as promote sustainable development.

Mountain specificities and development opportunities

By making use of traditional knowledge and comparative advantage of mountain niche products and services, mountain people should be enabled to make the best of the development opportunities in the mountains while protecting the mountain interests from negative impacts of globalization.

Environmental management and sustainable development

As a result of comparative advantage accrued from the overseas job, wage labor and service, agricultural lands in the mountain slopes are getting abandoned due to labor shortage and decline in investment in agriculture and livestock sector in all transects, but most apparently in middle and high mountains. Appropriate land use practices including the use of traditional agricultural practices need to be promoted for checking the accelerating process of soil erosion and landslides.

Sustainable development of the Himalayan region and down stream areas demands rational use of water resource of the region. As global climate change can have a profound effect on the Himalayan River System and Himalayan Water Resource Base and since both water forecast and regional water consumption has transboundary, regional aspects and teleconnections to more global aspects such as global change, current national approach towards water resource assessment and use needs to be complemented by a regional approach.

Such a regional approach through scientific regional integrated endeavors to begin with through an enhanced and improved flow of information on Himalayan water resource and management issues need to be initiated and eventually institutionalized.

Future Directions

Although the Himalayan mountain ecosystem is extremely important for the South Asian sub-continent for the goods and services it provides, integrated studies on the mountain ecosystems have, thus far, been meager. The present initiative is one of its own kinds where a multidisciplinary and multi-national approach has been adopted to identify the signatures of global change and its impact on the Himalayan mountain environment, as well as on the population living in the region. Hence, as a prerequisite to institutionalize this program in South Asia, certain necessary follow-up measures are required.

The outcomes and research results of the present study will be disseminated widely amongst the concerned stakeholders through appropriate measures including research papers published in peer reviewed journals.

Assessment of current impacts of global change individually on any one of the few subregions or sectors and choice of response could be within the present capabilities. The fact that they are projected to occur simultaneously and in concert with changes in population, technology, economics, and other environmental and social changes, as well as the chosen development paths, however, adds to the complexity of the impact assessment and the choice of appropriate responses. Furthermore, due to the marked variations in the Himalayan mountain regions in terms of latitude, longitude and altitude, as well as biophysical settings and socio-cultural set ups, neither the impacts of global change nor the response options will be uniform.

As there are still large uncertainties in the potential impacts of global change on the studied processes, as well as the interactions between them, the need for further detailed studies is apparent. The projection of climate change for the Himalayan mountain regions with contrasting variations of altitudes, surroundings, slopes and aspects over the small spatial scale; the effects of climate change on the South Asian monsoon and the ENSO phenomenon; etc. are among the major challenges and uncertainties in the modeling, for instance, of the hydrological cycle. Projections of agricultural crop yields are uncertain, not only because of the uncertainty in the hydrological cycle but also because of the potential positive effects of CO₂ and production practices. Integrated impact studies considering multi-stress factors are needed to better understand, describe and model the impacts of the ongoing global change processes in the region, their complex interrelations and interaction and to use the required integrated models (model systems) after their verification and validation with reference to recent and past observations and monitoring programmes for scenario-based simulations into the future.

In recognition of these issues, SASCOM has adopted Mountain Ecosystems as one of its four priority research areas during this decade for South Asia. Mountain ecosystems have also been identified as a major research component for the Earth

System Science Partnership (ESSP)/START Monsoon Asia Integrated Regional Studies (MAIRS). In view of the aforementioned unique features of the Himalayan Mountains, international programmes such as the 'Mountain Research Initiative' of the International Geosphere-Biosphere Programme (IGBP) and the International Human Dimensions Programme on Global Environmental Change (IHDP) have also recognized the importance of and willingness to support regional programmes in such research initiatives.

Appropriate follow-up works will be carried out including the development of necessary follow-up project proposals focusing on related issues including those related to integrated modeling for the assessment of the global change impacts in the Himalayan mountain regions and also looking out for the funding resources.

Appendix

Appendix A: Conferences/Symposia/Workshops

| S. No. | Seminar/Workshops | Dates | Venue | No. of Participants | Countries/Agencies Represented |
|--------|---|-----------------------|-----------|---------------------|--|
| 1. | Initial Meeting on Proposed Scoping Workshop on Global Change Impact Assessment for the Himalayan Mountain Regions | 21 – 22 July 2001 | Kathmandu | 13 | India, Nepal and Pakistan |
| 2. | Scoping Workshop on Global Change Impact Assessment for the Himalayan Mountain Regions | 2 – 5 October 2001 | Kathmandu | 40 | India, Nepal, Pakistan, APN and MRI |
| 3. | Preparatory Meeting for the Implementation of the Project on Global Change Impact Assessment for the Himalayan Mountain Regions | 20 – 22 June 2002 | Kathmandu | 17 | India, Nepal and Pakistan |
| 4. | First Year-End Workshop on Global Change Impact Assessment for the Himalayan Mountain Regions | 7 – 12 January 2003 | Kathmandu | 24 | India, Nepal, Pakistan, APN and Univ. of Gueleph |
| 5. | National Workshop in Kathmandu on Global Change Impact Assessment for the Himalayan Mountain Regions in Nepal | 1 November 2003 | Kathmandu | 28 | Nepal / concerned Nepalese Stakeholders |
| 6. | Second Year-End Workshop on Global Change Impact Assessment for the Himalayan Mountain Regions | 16 – 20 December 2003 | Kathmandu | 26 | India, Nepal, Pakistan and MRI |

| | | | | | |
|----|--|---------------|-----------|----|---|
| 7. | National Workshop in Islamabad on Global Change Impact Assessment for the Himalayan Mountain Regions in Pakistan | 7 August 2004 | Islamabad | 20 | Pakistan / concerned Pakistani Stakeholders |
|----|--|---------------|-----------|----|---|

Appendix B 1: Agenda/Programme
Appendix C 1: Participants List

**INITIAL MEETING ON
SCOPING WORKSHOP ON GLOBAL
CHANGE IMPACT ASSESSMENT FOR
HIMALAYAN REGIONS**

K
S

Appendix B 1: Agenda/Programme

Initial Meeting on Scoping Workshop on Global Change Impact Assessment for Himalayan Regions

**Date: Saturday, 21 July 2001
Himalaya**

Venue: Hotel

Programme

| <u>Time</u> | <u>Activities</u> |
|-----------------------------|--|
| 09:30 – 11:15 | Presentation and Discussion on APN Scoping Workshop: Objectives and expected Outputs |
| 11:15 – 11:30 | Tea Break |
| 11:30 – 12:30 | Discussion on Project Proposal: Issues, Areas to be focused, Methodology. |
| 12:30 – 13:30 | Lunch Break |
| 13:30 – 15:00 | Discussion on Scoping Workshop Programme Identification of Themes and Paper |
| Presenters 15:00 – 15:15 | Tea Break |
| 15:15 – 16:30 | Discussion on country specific issues |

**Date: Sunday, 22 July 2001
Himalaya**

Venue: Hotel

| <u>Time</u> | <u>Activities</u> |
|---------------|--|
| 09:30 – 11:15 | Discussion on Research Framework, Data Availability, Data Formats, Data Gaps |
| 11:15 - 11:30 | Tea Break |
| 11:30 – 13:00 | Identification of Other Partner Institutions, Experts, Research sites and Linkage Mechanisms |

13:00 – 14:00

Lunch Break

14:00 – 15:15

Summations of Discussions and Conclusions

Appendix C: Participants List**Initial Meeting on Proposed Scoping Workshop on Global Change Impact Assessment for the Himalayan Mountain Regions**

21 – 22 July 2001
Kathmandu

LIST OF PARTICIPANTS

| <i>S.N.</i> | <i>Name of the Participants</i> | <i>Contact Address</i> |
|-------------|---------------------------------|---|
| 1 | Dr. G. C. S. Negi | Scientist (Land & Water Resources Mgmt) G.B. Pant Institute of Himalayan Environment & Development, Garwal Unit, P.B. 92 Srinagar, Garwal (Uttaranchal) India (PIN 246174) Phone: 91-1388-52603 Fax: 91-1388-52424 Email: gbpgu@nde.vsnl.net.in |
| 2 | Dr. Kishore Sherchand | Chief, Agricultural Environment Section Nepal Agricultural Research Council (NARC) Khumaltar, Lalitpur Phone: 977-1-535981 Fax: 977-1-521197 Email: env_narc@col.com.np |
| 3 | Dr. K. M. Siddiqui | N.R.M. Consultant House No. 454B Street 11, F-10/2 Islamabad, Pakistan Phone: 0092-51-2212546 Email: kmsconsultant@mailcity.com |
| 4 | Dr. Shekhar Gurung | Tribhuvan University Campus, Kirtipur Kathmandu, Nepal Phone: 331076, 331054 (off.), 330534 (res.) Email: shgru@wlink.com.np |
| 5 | Mr. Adarsha P. Pokharel | Dept. of Hydrology and Meteorology P. O. Box 406 Kathmandu Phone: 262411 Email: adarsha@dhm.gov.np |
| 6 | Mr. Tara Man Gurung | Centre Region Irrigation Directorate Bhanimandap, Lalitpur Phone: 535002 (off.), 226808 (res.) Email: tara@mangrg.mos.com.np |
| 7 | Mr. Narendra Raj Khanal | Central Dept. of Geography Tribhuvan University, Kirtipur Phone: 330329 (off.), 274533 (res.) Email: cdg@wlink.com.np |
| 8 | Mr. Motilal Ghimire | Central Dept. of Geography Tribhuvan University, Kirtipur Phone: 330329 (off.) Email: cdg@wlink.com.np |
| 9 | Mr. Dhan Lall Shrestha | Water & Energy Commission Secretariat Singha Durbar, Kathmandu, Nepal Email: dlshrestha@weecs.gov.np |
| 10 | Prof. Dr. K. L. Shrestha | Institute for Development and Innovation 21/85 Pimbahal, Lalitpur, Nepal P. O. Box 12088 Kathmandu Phone: 977-1-533028 |

| | | |
|----|----------------------------|--|
| | | Email: klshrestha@wlink.com.np |
| 11 | Dr. S. R. Joshi | Institute for Development and Innovation Lalitpur, Nepal P. O. Box 12088 Kathmandu Phone: 977-1-533179 Email: ozone@ntc.net.np |
| 12 | Mrs. Bina Shrestha | Rural Development Department & UMN to Nepal P. O. Box 261 Kathmandu, Nepal Email: shashi@nebico.wlink.com.np |
| 13 | Mrs. Kanti Shrestha | RONAST Lalitpur, Nepal P. O. Box 12088 Kathmandu Phone: 977-1-533179 Email: ozone@ntc.net.np |

Appendix B 2: Agenda/Programme
Appendix C 2: Participants List

Scoping Workshop on "Global Change Impact Assessment for the Himalayan Mountain Regions"

K
25-0-2001

Appendix B 2: Agenda/Programme

**Scoping Workshop on Global Change Impact Assessment for
Himalayan Mountain Regions for Environment Management and
Sustainable Development**

2nd – 5th October 2001

Venue: Hotel Himalaya, Pulchowk, Lalitpur

**Sponsored by Asia Pacific Network for Global Change Research (APN) and
Organized by Institute for Development and Innovation (IDI) under the aegis
of
Ministry of Science and Technology (MoST), HMG/N**

PROGRAMME : INAUGURAL SESSION

| | |
|-------------------------|--|
| 9:30 a.m. - 10:00 a.m. | Registration of the Participants |
| 10:00 a.m. | Arrival of the Chief Guest Hon. Dr. Jagadish Chandra Pokharel, Member, National Planning Commission |
| 10:05 a.m. | Session Starts Chairperson – Mr. Adarsha Pokharel, Acting Secretary, Ministry of Science and Technology |
| 10:05 a.m. - 10:10 a.m. | Welcome Address by Prof. Dr. Kedar Lal Shrestha, Advisor, Ministry of Science and Technology (MoST) |
| 10:10 a.m. – 10:15 | Introductory Remarks by Mr. Martin Rice, Programme Officer, APN |
| 10:15 a.m. | Inauguration of the Workshop by the Chief Guest. |
| | REMARKS BY: |
| 10:15 a.m. - 10:20 a.m. | Prof. Dr. Lisa Graumlich, Mountain Research Initiative, IGBP |
| 10:20 a.m. - 10:25 a.m. | Dr. G. Campbell, Director, ICIMOD |
| 10:25 a.m. - 10:30 a.m. | Dr. A.P. Mitra, Director, SASRC |
| 10:30 a.m. - 10:40 a.m. | Inaugural Address by the Chief Guest |
| 10:40 a.m. - 10:45 a.m. | Vote of Thanks |
| 10:45 a.m. - 11:55 a.m. | Chairperson's Remarks and Conclusion of the Inaugural Session |
| 11:00 a.m. - 11:30 a.m. | Refreshments |

Technical Sessions

2nd October 2001
Himalaya, Lalitpur

Venue: Hotel

11:30 – 13:30

Technical Session - 1

Session Chair:

Dr. A.P. Mitra

Rapporteur:

Dr. Kishor Rajbhandari

Speakers:

Dr. Lisa Graumlich

Dr. V. Subramanian

Dr. Narpat S. Jodha

–

Dr. Narendra Man Shakya

Dr. Swayambhu M. Amatya

Topics

Globalisation and Mountain Regions

Water quality of the Himalayan Rivers

Economic Globalisation and Fragile Mountains

Imperatives and Adaptations

Applications of Hydrological Modelling – A tool for Impact Assessment in Mountainous Catchments of Nepal

Mountain Forest Resources and Climate Change

13:30 n.m. - 14:30 n.m.

LUNCH BREAK

14:30 – 17:30

Technical Session – 2

Session Chair:

Dr. A.P.Mitra

Rapporteur:

Dr. Bal Krishna Sapkota

Speakers:

Prof. K.L.Shrestha and

Mr. M. Ghimire

Dr. Arun B. Shrestha

Mr. Narendra Raj Khanal

Mr. Pradeep Mool

Dr. Mel Reasoner

Environmental Vulnerability Analysis: An Indicative Approach

Tsho Rolpa Glacier Lake-Is It Linked to Climate Change?

Land Use and Land Cover Change Changes In Mountain Regions of Nepal

The Glacial Lakes and Glacial Lake Outburst Flood events in the Hindu Kush-Himalayan Region

Overview on Mountain Research Initiative

17:30

Leave for Nagarkot by bus

3rd October 2001
Club, Nagarkot

Venue: Himalayan

9:00 – 11:00

Technical Session – 3

Chairman:
Rapporteur:

Dr. Lisa Graumlich
Mrs. Bina Shrestha

Speakers:

Dr. Kishor Sherchan
Agriculture

Global Climate Change and Mountain

Prof. Dr. Muhammed Bashir Chaudhary

***Global Change Impact Assessment for
Himalayan Mountain Regions for
Resource Management and Sustainable
Development***

Dr. Tirtha Bahadur Shrestha

***Natural Vegetation and Climate change
in Nepal Himalayas***

Dr. R. K. Mazari

***Climate Change Impacts in the
Himalayas***

Mr. Khurram Mehmood

***Selection of Site for Global Change
Study in the Mountain Regions of
Pakistan***

| | |
|----------------------|------------------|
| 11:00 – 11:15 | Tea Break |
|----------------------|------------------|

11:15 – 13:30

Technical Session – 4

Chairman:
Rapporteur:

Prof. V. Subramanian
Dr. Shree Krishna Giri

Speakers:

Prof. K.L. Shrestha

Global Change and Himalayan Fragile

Mountain Ecosystem: Impacts and Adaptations

Dr. Keshav Prasad Sharma

Global change impact on sediment flux in a

Himalayan basin

Dr. G. C. S. Negi

Impact of land use/land cover on watershed

hydrology - Water shade as a unit for global change impact assessment for

environmental management and sustainable development: Case Study from

India.

Dr. Khalid M. Siddiqui

***Sustainable Mountain Development and Global
Change in Pakistan***

Er. Kireet Kumar

***Status report of land and water resources
management in the Western Himalayan region***

1300: - 14:00

Lunch Break

14:00 – 15:00

Workshop Session

Chairman:

Prof. Dr. Muhammed Bashir Chaudhary

Rapporteur:

Dr. Kishor Sherchand

*General Discussion on
APN Project Proposal:*

Conceptual framework, Objectives, Action/output

15:00 – 15:15

Tea Break

15:15 – 17:00

Workshop Session (contd.)

Discussion on Research Guidelines

4th October 2001
Club, Nagarkot

Venue: Himalayan

9:30 – 11:15

Discussion on APN Project Proposal

11:15 – 11:30

Tea Break

11:30 – 13:00

Discussion on APN Project Proposal

13:00 – 14:00

Lunch Break

14:00 – 15:15

Discussion on Draft Proposal

15:15 – 15:30

Tea Break

15:30 – 17:30

Discussion on Draft Proposal

5th October 2001
Club, Nagarkot

Venue: Himalayan

9:30 – 11:00

Final Session

Draft Proposal Presentation and Discussion

11:00 – 11:15

Tea Break

11:15 – 13:00

Concluding Session

Finalization of the Project Proposal

Remarks and Vote of Thanks

12:00 – 13:00

Lunch

13:30

Departure for Hotel Himalaya by Bus

14:30 – 18:30

Free Time

18:30 – 20:30

Dinner at Hotel Himalaya



Appendix C 2 – List of Participants

Scoping Workshop on "Global Change Impact Assessment for the Himalayan Mountain Regions" 2nd to 5th October 2001, Kathmandu

1. **Prof. V. Subramanian**
School of Environmental
Sciences
Jawaharlal Nehru University
New Delhi-110067, India.
Telefax 00091-11-6106501,
6172438
Email: subrama42@hotmail.com
subra@jnuniv.ernet.in
2. **Er. Kireet Kumar**
Core Head- land and Water
Resource Management Group
GB Pant Institute of Himalayan
Environment and Development
Kosi-Katarmal, Almora-263643
Uttaranchal
Telefax 91-5962-41041
Fax: 91-5962-31360
Email: joshidc@vsnl.com
3. **Dr. R.K. Mazari**
Scientist E
Wadia Institute of Himalayan
Geology
Garhwal, Uttaranchal, India-
248001
Email: gewihg@mde.vsnl.net.in
Tel: 91-0135-624806, 627387
Fax: 91-0135-625212
4. **Dr. G.C.S. Negi**
Scientist
Land and Water Resources
Management Division
GB Pant Institute of Himalayan
Environment and Development
Garhwal Unit, PO Box 92
Srinagar-Garhwal 246 174
Uttaranchal, India
Email: gbpgu@nde.vsnl.net.in
Tel: 91-1388-52603
Fax: 91-1388-52424
5. **Dr. A.P. Mitra**
Honorary Scientist of Eminence
National Physical Laboratory
Dr. K.S. Krishnan Road
New Delhi-110012, India
Email (Off.): apmitra@ernet.in;
apmitra@csnpl.ren.nic.in
Email (Res.) :
apmitra@ndf.vsnl.net.in
Website: www.npl-cgc.ernet.in
Fax: 91-11-5752678
Tel: 91-11-5745298,
5731792(Off.), 6222218 (Res.)
6. **Dr. Amir Muhammed**
Rector,
National University of Computer
and Emerging Sciences
Fast House, G-9/4, Rohtas Road
Islamabad, Pakistan
Email: amir@nu.edu.pk
Tel: 92-51-2855072/3/4
Fax: 92-51-2855075
7. **Dr. Khalid M. Siddiqui**
Natural Resource Management
and Development Consultant
House No. 454B, Street11, F-10/2
Islamabad, Pakistan
Email:
kmsconsultant@mailcity.com
Tel: 92-051-212546 (Res.)
8. **Mr. Imtiaz Ahmad**
Director
Range Management and Forestry
Pakistan Agricultural Research
Council
Islamabad, Pakistan
Email: [imtiaz@rmf-
pare.isb.sdnpc.org](mailto:imtiaz@rmf-
pare.isb.sdnpc.org)
Tel: 92-51-9209913
Fax: 92-51-9202968

9. **Prof. Dr. Muhammad Bashir Chaudhri**
Dean/Principal
University College of Agriculture
Rawalakot, A.K. Pakistan
Email: bashir_bhr@yahoo.co.uk
Tel: 925-8710-42688
Fax: 925-8710-42826
10. **Mr. Khurram Mehmood**
Assistant Research Officer
Punjab Forestry Institute
Islamabad, Pakistan
Email: kpms_pk_us@yahoo.com
11. **Dr. Lisa Graumlich**
Director, Mountain Research
Center and Sciences
Montana State University
106 AJM Johnson Hall
Bozeman, MT 59717
406/994-5320 (voice), 406/994-
5122 (fax)
lisa@montana.edu
<http://mountains.montana.edu/>
12. **Dr. Mel Reasoner**
Mountain Research Initiative
Coordination Office
Barenplatz 2
3011 Bern, Switzerland
Email:
mel.reasoner@sanw.unize.ch
Tel: 41-31-328-2330
Fax: 41-31-328-2320
13. **Mr. Martin Rice**
Programme Manager
Asia Pacific Network for Global
Change Research (APN)
IHD Center Bldg., 5F, 1-5-1
Wakinohama Kaigan Dori, Chuo-
ku
Kobe 651-0073, Japan
Email: mrice@apn.gr.jp
Tel: 81-78-230-8017
Fax: 81-78-230-8018
14. **Dr. Binayak Bhadra**
Director of Programmes
ICIMOD
GPO Box: 3226, Jawalakhel,
Lalitpur, Nepal
Email: binayak@icimod.org.np
Tel: 977-1-525313, 536739
(Direct), 526338(Res.)
Fax: 977-1-524509, 536747
www.icimod.org.np
15. **Dr. Pradeep Mool**
ICIMOD
GPO Box: 3226, Jawalakhel,
Lalitpur, Nepal
Email: pradeep@icimod.org.np
Tel: 977-1-525313
Fax: 977-1-524509, 536747
www.icimod.org.np
16. **Dr. Narpat S. Jodha**
Policy Analyst
ICIMOD
GPO Box: 3226, Jawalakhel,
Lalitpur
Nepal
Email: jodha@icimod.org.np
Tel: 977-1-525313
Fax: 977-1-524509, 536747
www.icimod.org.np
17. **Dr. Keshav Prasad Sharma**
Department of Hydrology and
Meteorology
Babar Mahal
Kathmandu, Nepal
PO Box: 406
Email:
k_p_sharma@hotmail.com
Tel: 977-1-248808, 262374(Off.),
428050(Res.)
Fax: 977-1-262348
18. **Mr. Moti Lal Ghimire**
Central Department of Geography
Tribhuvan University, Kirtipur
Nepal
Email: cdg@wlink.com.np
Tel: 977-1-330329 (Off.)

19. **Dr. Arun Bhakta Shrestha**
Department of Hydrology and Meteorology
Babar Mahal
Kathmandu, Nepal
PO Box: 406
Tel: 977-1-248808, 262374(Off.)
Fax: 977-1-262348
20. **Mr. Dhan Lal Shrestha**
Water and Energy Commission Secretariat
Singha Durbar, Kathmandu, Nepal
Email: dshrestha@wecs.gov.np
21. **Dr. Madan Lal Shrestha**
Department of Hydrology and Meteorology
Babar Mahal, Kathmandu, Nepal
PO Box: 406
Tel: 977-1-248808, 262374(Off.)
Fax: 977-1-262348
22. **Dr. Kishor Sherchand**
Chief, Agricultural Environment Section
Nepal Agricultural Research Council (NARC)
Khumaltar, Lalitpur, Nepal
Email: env_narc@col.com.np
Tel: 977-1-535981
Fax: 977-1-521197
23. **Dr. Narendra Man Shakaya**
Coordinator
M.Sc. Programme in Water Resources Engineering
Pulchowk Campus
Institute of Engineering, Tribhuvan University
Pulchowk, Lalitpur, Nepal
24. **Mrs. Ila Shrestha**
Lecturer, Patan Multiple Campus
Patan Dhoka, Lalitpur
Email: shrestha_ila@yahoo.com
Tel: 977-1-541593
25. **Mrs. Kanti Shrestha**
RONAST
Lalitpur, Khumaltar
PO Box: 12088, Kathmandu
Tel: 977-1-533179
Email: ozone@ntc.net.np
26. **Mrs. Bina Shrestha**
Rural Development
Department/UMN
PO Box: 261, Kathmandu
Nepal
Email: shashi@nebico.wlink.com.np
27. **Dr. S.R. Joshi**
Bureau of Standards and Metrology
Balaju, Kathmandu, Nepal
Email: ozone@ntc.net.np
28. **Prof. Kedar Lal Shrestha**
Advisor
Ministry of Science and Technology
Singh Durbar, Kathmandu
Nepal
Tel: 977-1-244698
Fax: 977-1-225474
Email: kshrestha@wlink.com.np
29. **Dr. Timila Shrestha**
Joint Secretary
Ministry of Science and Technology
Singh Durbar, Kathmandu
Nepal
Tel: 977-1-244698
Fax: 977-1-225474
Email: timila@most.gov.np
30. **Dr. Shree Krishna Giri**
Under Secretary
Ministry of Science and Technology
Singh Durbar, Kathmandu
Nepal
Tel: 977-1-244698
Fax: 977-1-225474
Email: skgiri@most.gov.np

31. **Mr. Narendra Raj Khanal**
Central Department of Geography
Tribhuvan University, Kirtipur
Kathmadu, Nepal
Tel: 977-1-330339(Off.), 274533
(Res.)
Email: cdg@wlink.com.np
32. **Mr. Tara Man Gurung**
Centre Region Irrigation
Directorate
Bhanimandap, Lalitpur
33. **Mr. Adarsha P. Pokhrel**
Department of Hydrology and
Meteorology
Babar Mahal, Kathmandu, Nepal
PO Box: 406
Fax: 977-1-262348
Tel: 977-1-262411, 262374(Off.)
Email: adarsha@dhm.gov.np
34. **Dr. Shekhar Gurung**
Principal, University Campus
Tribhuvan University
Kirtipur, Kathmandu, Nepal
Tel: 977-1-331076, 331054(Off.),
330534 (Res.)
Email: shgru@wlink.com.np
35. **Dr. Balkrishna Sapkota**
Head, Department of Science and
Humanities
Pulchowk Campus
Institute of Engineering,
Tribhuvan University
Lalitpur, Nepal
Tel: 977-1-543072 (Off.), 482340
(Res.)
Email: dsh@dsh.com.np
36. **Dr. Tirtha Bahadur Shrestha**
Sanepa, Lalitpur
Nepal
Tel: 977-1-521358
37. **Mr. Ashok Saraf**
Ministry of Population and
Environment
Singha Durbar, Kathmandu,
Nepal
38. **Dr. Swayambhu Man Amatya**
Forest Research and Survey
Babar Mahal, Kathmandu
Nepal
39. **Mr. Pramod Sagar Pradhan**
South Asian Institute for
Technology
Jawalakhel, Lalitpur
Nepal
40. **Dr. Chandra Gurung**
World Wildlife Fund
Jawalakhel, Lalitpur
Nepal
41. **Mr. Sarju Vaidya**
Department of Hydrology and
Meteorology
Babar Mahal
Kathmandu, Nepal
PO Box: 406
Tel: 977-1-262411, 262374(Off.)
Fax:977-1-262348
42. **Dr. Kishor Rajbhandari**
Amrit Science Campus
Thamel, Kathmandu, Nepal
Tel: 9771-1-4360077
Email: kgnn@wlink.com.np
43. **Mr. Kedar Jung Thapa**
Institute for Development and
Innovation
Lalitpur, Nepal
Tel: 977-1-5525669

Appendix B 3: Agenda/Programme
Appendix C 3: Participants List

**Global Change Impact Assessment for Himalayan
Mountain Regions
Environmental Management and Sustainable Development**

PREPARATORY WORKSHOP

~~K~~
~~28--22 J--2002~~

Appendix B 3: Agenda/Programme

**Preparatory Workshop on
Global Change Impact Assessment for Himalayan Mountain
Regions for Environmental Management and Sustainable
Development
Kathmandu
20 - 22 June 2002**

SCHEDULE

Thursday, June 20, 2002

09:00 – 10:30 am: *First Session: Presentation and Discussion on the Mountain Project*

Chair: Dr. A. P. Mitra

9:00 – 9:30: A Review of the APN Mountain Proposal
- Kedar Lal Shrestha

- **OBJECTIVES**
- **EXPECTED OUTPUTS**
- **APPROACH**

WHAT is to be done?

- a. *NATIONAL CASE STUDIES – (global change impact assessments on the Himalayan mount sections based on historical records and available global/climate change projections)*
 - i. *Review existing literature*
 - ii. *Additional secondary data collection and analyses – decide on data sets needed, units of measurement and standard format for collecting climate data, agricultural data, water data, socio-economic data*
 - iii. *Identify where existing data sets are located*
 - iv. *Vulnerability analysis and impact assessment on agriculture and water resource*
- b. *Synthesis – Vulnerability analysis – Impact Assessment*
- c. *Conclusions and Recommendations*

9:30 – 10:30: Discussion

10:30 – 11:00 am: Coffee Break

11:00 a.m. – 12:30 pm: *Second Session -Conducting National Scale Case Studies*

- *For each national study:*
 - i. Identify and describe agricultural pattern, food security and water availability at the various altitudinal strata of the Himalayan*

12 noon– 1:30 pm

LUNCH

Mountain Regions in the country

- ii. Climate change and extreme events*
- iii. Cumulative changes*
- iv. Effects of globalization*
- v. Analyze past variability and extreme events, cumulative changes and effects of globalization*
- vi. Assess vulnerabilities of and impacts on water resources*
- vii. Assess vulnerabilities of and impacts on socio-economic sectors and agriculture – include damage assessment*
- viii. Overview of adaptation options and experiences*

11:00 – 11:30

INDIA (Er. Kireet Kumar and Dr. G. C. S. Negi)

11:30 – 12:00

PAKISTAN (Dr. K. M. Siddiqui)

12:00 - 12:30

NEPAL (Dr. M. L. Shrestha, Dr. N. Shakya and Dr. K. Sherchan)

12:30 – 2:00 pm: Lunch Break

2:00 – 3:30 pm:

Discussion on Conducting National Case Studies

3:30 – 4:00 pm:

Coffee Break

4:00 – 5:00 pm:

Conclusions and agreement on common methodology for Year 1 activities

Friday, June 21, 2002

9:00 –10:00 am

Discussion on Research Logistical Arrangements

10:00 –10:30 am

BREAK

10:30 –12:00 am

Expected Deliverables for Year 1

12:00 – 1:30 pm

LUNCH

1:30 – 3:00 pm

Discuss Common Strategies

3:00 – 4:30 pm

Next Steps

Saturday, June 22, 2002

9:00 am – 12 noon

Core Group to Prepare:

- Final Meeting Report
- Agenda for Year-end Meeting (see Attachment 1)
- Expanded Program (see Attachment 6)
- Format for Data Sets

1:30 – 3:30 pm

Finalize Format for Data Sets

3:30 – 4:30 pm

Distribute:

- Final Meeting Report
- Agenda for Year-end Meeting
- Expanded Program
- Format for Data Sets

Preparatory Workshop
on
Global Change Impact Assessment in the Himalayan Mountain Region for
Environmental Management and Sustainable Development
Kathmandu, Nepal
June 20 - 22, 2002

PARTICIPANT LIST

PRINCIPAL INVESTIGATOR

Prof. Dr. Kedar Lal Shrestha

President
Institute for Development and
Innovation
Lalitpur, Nepal
Tel: 977-1-533028
E-mail:
klshrestha@wlink.com.np

and

Advisor
Ministry of Science and
Technology
His Majesty's Government of
Nepal
Singh Durbar, Kathmandu, Nepal
Tel :977-1-244698
Fax: 977-1-225474

CORE SCIENCE GROUP

India

Dr. A.P. Mitra

Director, START South Asia
Regional Research Center
National Physical Laboratory
Dr. K.S. Krishnan Road
New Delhi, 110012, India
Tel: 91-11-5745298-Off
Fax: 91-11-5852678
E-mail: apmitra@ernet.in or
apmitra@ndf.vsnl.net.in

Er. Kireet Kumar

Scientist and Head (LWRM)
G.B.Pant Institute of Himalayan
Environment and Development
Kosi-Katarmal, Almora
(Uttaranchal) India 263 643

Tel: 91-5962-41041 (o); 91-
5962-
41051 (r)
E Mail: kireetpan@yahoo.com or
kireet@gbpihed@nic.in

Nepal

Dr. Madan Lal Shrestha

Department of Hydrology &
Meteorology
Babar Mahal
Kathmandu, Nepal
P. O. Box 406
Tel: (+977-1) 248808, 262374
Fax No.: 977-1-262348
E-mail: madanls@hotmail.com

Dr. Kishor Sherchand

Chief, Agricultural Environment
Section
Nepal Agricultural Research
Council (NARC)
Khumaltar, Lalitpur
Phone: 977-1-535981
Fax: 977-1-521197
Email: env_narc@col.com.np

Dr. Narendra Shakya

Institute for Engineering Scientist of Eminence
Tribhuvan University
Pulchowk, Lalitpur
Nepal.
E-mail: nmsioe@yahoo.com

Dr. Balkrishna Sapkota

Institute of Engineering
Tribhuvan University
Pulchowk, Lalitpur
Nepal.
E-mail:
balkrishna2005@yahoo.com

Mr. Motilal Ghimire

Lecturer,

Central Department of Geography
Tribhuvan University
Kathmandu, Nepal
Tel: 977-1-330-329; 977-1-333-057
E-mail: cdg@wlink.com.np or
motilal@wlink.com.np

Dr. D.P. Sherchan

Nepal Agricultural Research
Council (NARC)
Khumaltar, Lalitpur, Nepal
E-mail:
timjan@pamberque.wlink.com.np

Pakistan

Dr. Khalid M. Siddiqui

Natural Resource Management
and Development Consultant
House No. 454B, Street 11, F-10/2
Islamabad, Pakistan.
Tel: 051-212546 (r)
E-mail:
kmsconsultant@mailcity.com

OTHER PARTICIPANTS

ICIMOD

Dr. Pradeep Mool

ICIMOD
G.P.O.Box3226
Jawalakhel, Lalitpur, Nepal.
Tel: 977-1-525313
Fax: 977-1-524509,536747
E-mail: pradeep@icimod.org.np
Web page: www.icimod.org.np

Mr. Samjhawl Bajracharya

ICIMOD
G.P.O.Box3226
Jawalakhel, Lalitpur, Nepal
Tel: 977-1-525313
Fax: 977-1-524509,536747

OTHERS

Dr. S. R. Joshi

Bureau of Standards and
Metrology
Balaju, Kathmandu
Member, Scientific Committee
Institute for Development and
Innovation
E-mail: ozone@ntc.net.np

Mrs. Kanti Shrestha

Institute for Development and
Innovation &
RONAST
Lalitpur, Nepal
P. O. Box 12088 Kathmandu
Phone: 977-1-533179
E-mail: ozone@ntc.net.np

Mr. Suchit Shrestha

Nepal Agricultural Research
Council (NARC)
Khumaltar, Lalitpur,
Nepal.
E-mail: env_narc@col.com.np

Mr. Raj Hari Sharma

Institute of Engineering
Tribhuvan University
Pulchowk, Lalitpur
Nepal.
E-mail: rhs@email.com

Mr. R. Heggen

Institute of Engineering
Tribhuvan University
Pulchowk, Lalitpur
Nepal
E-mail: rheggen@unm.edu

Appendix B 4: Agenda/Programme
Appendix C 4: Participants List

**Global Change Impact Assessment for
Himalayan Mountain Regions**
Environmental Management and Sustainable Development

**FIRST YEAR-END
SEMINAR/WORKSHOP**

**Kathmandu, Nepal
10-12 January 2003**

Appendix B 4: Agenda/Programme

**Global Change Impact Assessment for
Himalayan Mountain Regions
*Environmental Management and Sustainable Development***

**YEAR – END WORKSHOP/SEMINAR
10th to 12th January 2003**

SCHEDULE

Friday, January 10, 2003

08:30 a.m. – 10:00 a.m. *First Session: Presentation and Discussion on the Mountain Project*

Chair: Dr. A. P. Mitra

8:30 a.m. – 9:00 a.m. ***Welcome Address and a Review of the APN Mountain Project: Targets and Accomplishments***

Dr. Kedar Lal Shrestha, Nepal

9:00 a.m. – 9:30 a.m. ***A Review of the APN Water Resources Project: Targets and Accomplishments***

Dr. Amir Muhammad, Pakistan

9:30 a.m. – 10:00 a.m. ***Discussion of Common Interests and Themes***


10:00 a.m. – 10:15 a.m. Coffee Break

10:15 a.m. – 12:30 p.m. *Second Session - Keynote Papers*

Chair: Dr. Amir Muhammed

 ***Remote Sensing as a tool for Monitoring Global Change Impacts in the Himalayan Mountain Regions***

Mr. Pramod Pradhan, Nepal

 ***Projected Climate Change and Variability in the Himalayan Mountain Regions***

Dr. Rupa Kolli, India

 ***Land Use and Land Cover Changes in the Himalayan Regions***


Mr. Narendra Khanal, Nepal

 ***Recent Studies on the Himalayan Glaciers and Glacial Lakes***

Mr. Pradeep Mool, Nepal

 ***El Nina and River Flows in Nepal***

Ms. Archana Shrestha, Nepal

 ***A model to assess ecological and economic Value of an Ecosystem***

Mrs. Joyashree Roy, India

12:30 p.m. – 1:30 p.m. Lunch Break

| | |
|------------------------------|--|
| 1:30 a.m. – 2:30 p.m. | <i>Third Session – Presentation of country Studies</i> |
| | INDIA <i>Dr. G. C. S. Negi; Er. Kireet Kumar and Dr. V. Joshi</i> |
| | Pakistan <i>Dr. K. M. Siddiqui</i> |
| 2:30 p.m. – 2:45 p.m. | Coffee Break |
| 2:45 p.m. – 3:30 p.m. | <i>Third Session – Presentation of country Studies (contd.)</i> |
| | NEPAL <i>Dr. M. L. Shrestha (climate change & variability), Dr. N. Shakya (hydrological changes); Dr. K. Sherchand (Agriculture) and Dr. M. Ghimire (socio-economic impacts)</i> |

Saturday, June 11, 2003

| | |
|-------------------------|---|
| 9:00 a.m. – 10:00 a.m. | Discussion On Research Logistical Arrangements |
| 10:00 a.m. – 10:30 a.m. | Break |
| 10:30 a.m. – 12:00 NOON | Expected Deliverables for Year 1 |
| 12:00 NOON – 1:30 p.m. | Lunch |
| 1:30 p.m. – 3:00 p.m. | Discuss Common Strategies |
| 3:00 p.m. – 4:30 p.m. | Next Steps |

Sunday, June 12, 2003

| | |
|-----------------------|--|
| 9:00 a.m. – 12 NOON | Core Group to Prepare: <ul style="list-style-type: none">▪ Final Meeting Report▪ Agenda for Year-end Meeting (see Attachment 1)▪ Expanded Program (see Attachment 6)▪ Format for Data Sets |
| 1:30 p.m. – 3:30 p.m. | Finalize Format for Data Sets |
| 3:30 p.m. – 4:30 p.m. | Distribute: <ul style="list-style-type: none">▪ Final Meeting Report▪ Agenda for Year-end Meeting▪ Expanded Program▪ Format for Data Sets |

Appendix C 4: Participants List

Global Change Impact Assessment for Himalayan Mountain Regions *Environmental Management and Sustainable Development*

FIRST YEAR-END SEMINAR/WORKSHOP

Kathmandu, Nepal
10 - 12 January 2003

PARTICIPANT LIST

INDIA

Dr. A. P. Mitra

Director, START South Asia
Regional

Research Center

Hon. Scientist of Eminence

National Physical Laboratory

Dr. K. S. Krishnan Road

New Delhi, 110012, India

Tel: 91-11-5745298-Off

Fax: 91-11-5852678

E-mail: apmitra@ernet.in or

apmitra@ndf.vsnl.net.in

Dr. D. K. Chadda

Principal Advisor

School of Environmental Management

Guru Gobind Singh Indraprastha

University

Kashmiori Gate

New Delhi 110 006 INDIA

E-mail: d_k_chadha20002@yahoo.com

Dr. Rupa Kumar Koli

Scientist-E & Head

Climatology & Hydrometeorology

Division

Indian Institute of Tropical Meteorology

Homi Bhabha Road, Pune 411 008, India

E-mail: kolli@tropmet.res.in

Dr. Joyashree Roy

Reader

Department of Economics

Jadavpur University

11 central Park

Calcutta 700 032 INDIA

Er. Kireet Kumar

Scientist and Head (LWRM)

G. B. Pant Institute of Himalayan

Environment and Development

Kosi-Katarmal, Almora (Uttaranchal)

India 263 643

Dr. G.C.S. Negi

Land and Water Resources Management
Division

G.B. Pant Institute of Himalayan

Environment and Development

Garhwal Unit, P.O. Box 92

Srinagar-Garhwal 246 174

Uttaranchal, India.

Dr. Varun Joshi

G.B. Pant Institute of Himalayan

Environment and Development

Garhwal Unit, P.O.Box 92

Srinagar (Garhwal) 246 174, UA

India

NEPAL

Prof. Dr. Kedar Lal Shrestha

Chief Advisor

Ministry of Science and Technology

Singh Durbar

Kathmandu, Nepal

Tel: 977-1-244698 (Off.)

977-1-533028 (Res.)

Fax: 977-1-225474

E-mail: klshrestha@most.gov.np

Dr. Madan Lal Shrestha
Department of Hydrology &
Meteorology
Babar Mahal
Kathmandu, Nepal
P. O. Box 406
Tel: (+977-1) 248808,262374
Fax No.:977-1-262348
E-mail: madanls@hotmail.com

Dr. Narendra Shakya
Institute for Engineering
Tribhuvan University
Pulchowk, Lalitpur
Nepal.
E-mail: nmsioe@yahoo.com

Dr. Balkrishna Sapkota
Institute of Engineering
Tribhuvan University
Pulchowk, Lalitpur
Nepal.
E-mail: balkrishna2005@yahoo.com

Mr. Motilal Ghimire
Lecturer, Central Department of
Geography
Tribhuvan University
Kathmandu, Nepal
Tel: 977-1-330-329 (Off.)
Tel: 977-1-333-057 (Res.)
E-mail:cdg@wlink.com.np or
motilal@wlink.com.np

PAKISTAN

Dr. Amir Muhammed
Chairman, SASCOM and
President, ASIANICS
P.O.Box 2316
Islamabad,
Pakistan

Dr. Shahid Ahmad
Chief Scientific Officer
Natural Resource Division
Pakistan Agricultural Research
Council
P.O.Box 1031
Islamabad, Pakistan

Mr. Anjum Bari Farooqi
Director
Pakistan Meteorological
Department
Sector H-8.2, Islamabad
Pakistan

Dr. Usman Qazi
Cameos Consultants
28 Saleem Plaza,
Off Jinnah Road
Quetta
Pakistan

Dr. Khalid M. Siddiqui
Natural Resource Management
and Development Consultant
House No. 454B, Street 11, F 10/2
Islamabad, Pakistan.
Tel: 051-212546
E-mail: kmsconsultant@mailcity.com

APN

Mr. Martin Rice
Programme Manager
APN Secretariat
IHD Building, 5F, 1-5-1
Wakinohama Kaigan Dori
Chuo-ku, Kobe 651-0073,
JAPAN

Dr. C. Sharma
APN Regional Office
Room No. 209
National Physical Laboratory
Dr. K.S.Krishnan Marg
New Delhi 110 012, India.

USA

Dr. Dipak Gupta
Professor
Department of Political Science
San Diego State University
5500 Campanile Drive
San Diego, CA 92182
Tel: 619-594-4067
E-mail: dgupta@mail.sdsu.edu

Dr. Bonnie Stewart

Director of Program Development
San Diego State University Foundation
5250 Campanile Drive
San Diego, CA 92120
Tel: 619-594-5644
E-mail: bstewart@foundation.sdsu.edu

UNDP/Nepal

Mr. T. Palanivel

Programme Coordinator
UNDP's Asia Pacific Regional
Programme on the Macroeconomics of
Poverty Reduction
South & West Asia Sub-Regional
Resource Facility
UN House, Pulchowk
G. P. O. Box 107, Kathmandu, Nepal
www.asiapropoor.net
E-mail: t.palanivel@undp.org
Tel : (977-1) 548 553 Ext. 2007
Fax : (977-1) 548 597

OTHER PARTICIPANTS

SAIT

Mr. Pramod Pradhan

South Asian Institute of Technology
(SAIT)
Jawalakhel
Lalitpur.

ICIMOD

Mr. Basanta Shrestha

ICIMOD
G.P.O.Box3226
Jawalakhel, Lalitpur
Nepal.

Fax: 524509,536747

Dr. Pradeep Mool

ICIMOD
G.P.O.Box3226Jawalakhel, Lalitpur
Nepal.
Tel: 977-1-525313
Fax: 977-1-524509,536747
E-mail: pradeep@icimod.org.np
Web page: www.icimod.org.np

NATIONAL WORKSHOP

On

**Country study for Global change Impact Assessment
for Himalayan**

Mountain regions: Kaligandaki basin

K
L-N 2004

National workshop
On
Country study for Global change Impact Assessment for
Himalayan
Mountain regions: Kaligandaki basin

Saturday, November 1, 2003
Himalaya

Venue: Hotel

SCHEDULE

9:00 - 10:30 am **First session: Presentation and discussion on the country study**

- | | |
|--|------------------------------|
| • A preview of the project and country study | Prof. Dr. Kedar Lal Shrestha |
| • Climate change and variability | Dr. M .L. Shrestha |
| • Hydrological Changes | Dr. N. Shakya |
| • Socio- economic Impacts- Survey results | Dr. B.K. Sapkota |
| • Food security | Dr. K. Sherchand |
| • Socio- Economic Impacts | Mr. M. Ghimire |

10:30 – 10:45 am **TEA BREAK**

10:45 - 12:30 **Keynote papers**

- | | |
|---------|------------------------|
| • ----- | Mr. Ratnakar Adhikari |
| • ----- | Mr. Lekh Nath Pokharel |
| • ----- | Mr. Yam Raj Pandey |
| • ----- | Dr. Kiran Raj Shrestha |

12:30-1:30 pm **Workshop**

- ❖ **Vulnerability indicators**
- ❖ **Present and future vulnerabilities**
- ❖ **Adaptation Strategies**
- ❖ **Framework for Scenario Development**
- ❖ **Framework for Policy Recommendations**

1:30 pm **LUNCH**

National Workshop
Global Change Impact Assessment for Himalayan Mountain Regions:
Kali Gandaki Basin
 1st November 2003
 Kathmandu

LIST OF PARTICIPANTS

| <i>S.N.</i> | <i>Name of the Participants</i> | <i>Contact Address</i> |
|-------------|---------------------------------|--|
| 1 | Prof. Dr. K. L. Shrestha | Institute for Development and Innovation 21/85 Pimbahal, Lalitpur, Nepal P. O. Box 12088 Kathmandu Phone: 977-1-533028 Email: klshrestha@wlink.com.np |
| 2 | Dr. Kishore Sherchand | Chief, Agricultural Environment Section Nepal Agricultural Research Council (NARC) Khumaltar, Lalitpur Phone: 977-1-535981 Fax: 977-1-521197 Email: env_narc@col.com.np |
| 3 | Dr. Madan Lal Shrestha | Department of Hydrology and Meteorology Babar Mahal, Kathmandu, Nepal PO Box: 406 Tel: 977-1-248808, 262374(Off.) Fax: 977-1-262348 |
| 4 | Dr. Narendra Man Shakaya | Coordinator M.Sc. Programme in Water Resources Engineering Pulchowk Campus Institute of Engineering, Tribhuvan University Pulchowk, Lalitpur, Nepal |
| 5 | Dr. Balkrishna Sapkota | Head, Department of Science and Humanities Pulchowk Campus Institute of Engineering, Tribhuvan University Lalitpur, Nepal Tel: 977-1-543072 (Off.), 482340 (Res.) Email: dsh@dsh.com.np |
| 6 | Dr. Arun Bhakta Shrestha | Department of Hydrology and Meteorology Babar Mahal Kathmandu, Nepal PO Box: 406 Tel: 977-1-248808, 262374(Off.) Fax: 977-1-262348 |
| 7 | Mr. Narendra Raj Khanal | Central Dept. of Geography Tribhuvan University, Kirtipur Phone: 330329 (off.), 274533 (res.) Email: cdg@wlink.com.np |
| 8 | Mr. Motilal Ghimire | Central Dept. of Geography Tribhuvan University, Kirtipur Phone: 330329 (off.) Email: cdg@wlink.com.np |
| 9 | Mr. Sital Raj Regmi | Department of Irrigation Ministry of Water Resources Jawalakhel, Lalitpur, Nepal |

| | | |
|----|---|--|
| 10 | Mr. Kedar Jung Thapa | Institute for Development and Innovation Lalitpur, Nepal P. O. Box 12088 Kathmandu Phone: 977-1-525669 Email: klshrestha@wlink.com.np |
| 11 | Dr. S. R. Joshi | Institute for Development and Innovation Lalitpur, Nepal P. O. Box 12088 Kathmandu Phone: 977-1-533179 Email: ozone@ntc.net.np |
| 12 | Mr. Lekh Nath Pokharel | Home Ministry His Majesty's Government of Nepal Singh Durbar, Kathmandu, Nepal |
| 13 | Mrs. Kanti Shrestha | RONAST Lalitpur, Nepal P. O. Box 12088 Kathmandu Phone: 977-1-533179 Email: ozone@ntc.net.np |
| 14 | Mr. Ashok Saraf | Ministry of Population and Environment Singha Durbar, Kathmandu, Nepal |
| 15 | Prof. Dr. Bidur Prasad Upadhyaya | Central Department of Meteorology Tribhuvan University Kirtipur, Nepal |
| 16 | Mr. Lochan Devkota | Central Department of Meteorology Tribhuvan University Kirtipur, Nepal |
| 17 | Ms. Archana Shrestha | Central Department of Meteorology Tribhuvan University Kirtipur, Nepal |
| 18 | Mr. Ratnakar Adhikari | SAWTEE 256 Lamtangeen Marg Baluwatar, Kathmandu, Nepal Tel: 977-1-4415824 |
| 19 | Mr. Yam Raj Pandey | Agriculture Research Station Lumle, Pokhara, Nepal |
| 20 | Mr. Kiran Raj Shrestha | Agriculture Research Station Lumle, Pokhara, Nepal |
| 21 | Mr. Suchit Shrestha | Agriculture Research Station Lumle, Pokhara, Nepal |
| 22 | Mr Narayan Prasad Gautam | Department of Water Induced Disaster Prevention Pulchowk, Lalaitpur, Nepal |
| 23 | Mr. S. Dhungel | Water and Energy Commission Singh Durbar Kathmandu, Nepal |
| 24 | Mr. Keshab Dhoj Adhikari | Water and Energy Commission Singh Durbar Kathmandu, Nepal |
| 25 | Mr. Bhaskar Singh Karki | King Mahendra Trust for Nature Conservation Office Jawalakhel, Lalitpur, Nepal |
| 26 | Mr. B. Basnet | King Mahendra Trust for Nature Conservation Office Jawalakhel, Lalitpur, Nepal |
| 27 | Mr. Khem Raj Sharma | Department of Irrigation Ministry of Water Resources Jawalakhel, Lalitpur, Nepal |
| 28 | Dr. Prahlad Thapa | Department of Horticulture Ministry of Agriculture and Cooperatives Khumaltar, Lalitpur, Nepal |

**GLOBAL CHANGE IMPACT ASSESSMENT FOR HIMALAYAN
MOUNTAIN REGIONS
FOR ENVIRONMENTAL MANAGEMENT AND SUSTAINABLE DEVELOPMENT**

SECOND YEAR – END SEMINAR/WORKSHOP

~~K~~
~~16~~ ~~20~~ ~~D~~ ~~2003~~

GLOBAL CHANGE IMPACT ASSESSMENT FOR HIMALAYAN MOUNTAIN REGIONS

FOR ENVIRONMENTAL MANAGEMENT AND SUSTAINABLE DEVELOPMENT

SECOND YEAR – END SEMINAR/WORKSHOP

Hotel Himalaya, Kathmandu

16 – 20 December 2003

SCHEDULE

Tuesday, December 16, 2003

0900-0930 **REGISTRATION OF THE PARTICIPANTS**

SEMINAR/WORKSHOP ON GLOBAL CHANGE ASSOCIATED VULNERABILITIES OF SOUTH ASIAN WATER RESOURCES AND IMPACTS ON HIMALAYAN MOUNTAIN REGIONS

930-1015.....SESSION 1: OPENING SESSION

0930-0940 **WELCOME ADDRESS**

Prof. Dr. Kedar Lal Shrestha, Chief Advisor, Ministry of Science and Technology (MoST)

0940-1015 **OPENING REMARKS**

0940-0950 ... *Dr. Amir Muhammed, Chairperson, South Asia START Committee (SASCOM)*

0950-1000 ... *Dr. A. P. Mitra, Director, South Asia START Regional Centre (SASRC)*

1000-1010 ... *Dr. H. Virji, Deputy Director, START*

1010-1020 ... *Dr. C. Sharma, Liaison Officer, South Asia Office, Asia Pacific Network (APN)*

1020-1030...*Dr. Bonnie Stewart, Executive Director, Hansen Institute for World Peace (HIWP)*

1030-1045 **REFRESHMENTS**

1045-1300SESSION 2: PROJECTS OVERVIEW

1045-1115 ... **A Review of the APN Water Resources Project Targets and Accomplishments**

Dr. Amir Muhammad, Pakistan

1115-1145 ... **A Review of the APN Mountain Project Targets and Accomplishments**

Dr. Kedar Shrestha, Nepal

1145-1215 **Discussion of Common Interests and Themes**

1215-1300.....**Review of Meeting Objects and Goals for Water Project**

Dr. Amir Muhammed

1300-1400.....**LUNCH**

1400-16:00SESSION 3:

Presentation of the National Scale Case Studies on Water in SA

- 1400-1430.....**Bangladesh**
Dr. Ahsan Ahmed and Dr. D.A. Quadir
- 1430-1500 ... **India**
Dr. J. Roy (Socio-Economic) and Dr. Rupa Kolli
- 1500-1530.....**Nepal**
Dr. Balkrishna Sapkota and Dr. Motilal Ghimire
- 1530-1600 ... **Pakistan**
Dr. Shahid Ahmed and Dr. Pervaiz Amir

1600-1630 **BREAK**

Tuesday, December 16, 2003 (continued)

1400-16:00SESSION 3:

PRESENTATION OF THE NATIONAL SCALE CASE STUDIES CONTINUED

- 1630-1700...**Synthesis Report for South Asia Region: Assessments of National and Regional Vulnerability & Successful Coping Strategies to Change and Extreme Events**
Dr. Monirul Mirza (Bangladesh)
- 1700-1800 **Discussion of Country Reports and Synthesis Paper and finalize Publication Strategy for all Presentations**

Thursday, December 18, 2003

900-930 INTRODUCTORY BRIEFINGS

- **Dr. K. L. Shrestha**
- **Dr. A. P. Mitra**
- **Dr. A. Muhammed**

0930 – 1000 PRESENTATIONS OF KEYNOTE PAPER

- **DR. ALFRED BECKER**

"Challenges in Mountain Research from an Interdisciplinary Point of View"

1000-1130... PRESENTATIONS OF COUNTRY SPECIFIC FIELD SURVEY REPORTS ON HIMALAYAN MOUNTAIN REGIONS

- ❖ **INDIA** *Er. Kireet Kumar*
- ❖ **NEPAL** *Dr. Balkrishna Sapkota and Mr. Moti Ghimire*
- ❖ **PAKISTAN** *Dr. Pervaiz Muhammed*

11:30-12:00.....DISCUSSIONS ON FIELD SURVEY REPORTS

12:00-17:30.....SITE VISIT

Friday, December 19, 2003

09:00-10:30 ... PRESENTATIONS ON CLIMATE VARIABILITY AND HYDROLOGY

INDIA *Er. Kireet Kumar / Dr. V. Joshi*

NEPAL *Dr. M. L. Shrestha & Dr. Narendra Shakya*

PAKISTAN .. *Dr. Parvaiz Muhammed*

10:30-10:45..... **TEA BREAK**

10:45-11:45... **PRESENTATIONS ON FOOD SECURITY AND SOCIO-ECONOMIC CHANGES**

INDIA *Er. Kireet Kumar / Dr. V. Joshi*

NEPAL *Dr. Kishor Sherchand & Mr. Moti Lal Ghimire*

PAKISTAN .. *Dr. Parvaiz Muhammed*

11:45-12:30.....**DISCUSSIONS ON THEMATIC ISSUES**

12:30-13:30.....**LUNCH**

14:00-16:30.....**GROUP DISCUSSIONS**

16:30-17:00.....**PLENARY SESSION AND PRESENTATION OF RECOMMENDATIONS**

17:00-17:30.....**PRESS MEET**

17:30-20:30.....**DINNER**

Saturday, December 20, 2003

09:00-11:00 ... **PREPARE REPORTING PLANS AND REPORTS**

11:00-11:15.....**TEA BREAK**

11:15-12:30... **PREPARE FINAL MEETING REPORT**

12:30-14:00... **LUNCH**

**GLOBAL CHANGE IMPACT ASSESSMENT FOR
HIMALAYAN MOUNTAIN REGIONS:
FOR ENVIRONMENTAL MANAGEMENT AND SUSTAINABLE DEVELOPMENT**

Seminar/Workshop
Kathmandu, Nepal
December 16-20, 2003

PARTICIPANT LIST

INDIA

Dr. A. P. Mitra

Director, START South Asia
Regional Research Center
Hon. Scientist of Eminence
National Physical Laboratory
Dr. K. S. Krishnan Road
New Delhi, 110012, India
Email: apmitra@ernet.in,
apmitra@ndf.vsnl.net.in,
apmitra@mail.nplindia.ernet.in
Tel: 91-11-25731792, 91-11-
25745298
Fax: 91-11-25852678

Dr. Joyashree Roy

Professor
Department of Economics and
Coordinator
Global Change Program
Jadavpur University
11 Central Park, Calcutta 700 032
India
Email: jroy@cal2.vsnl.net.in
Tel: 91-33-24257382, 91-33-
24146666
(Ext 2345)
Fax: 91-33-24127905

Dr. Chhemendra Sharma

APN Liaison Office for South Asia
SASRRC, Centre on Global Change
National Physical Laboratory
Dr. K. S Krishnan Marg
New Delhi 110 012, India

Email:

csharma@mail.nplindia.ernet.in

Tel: +91-11-25742610 to 13 (Ext
2331)

Fax: +91-11-25726938 and 25726952

Dr. Varun Joshi

G B Pant Institute of Himalayan
Environment and Development
Garhwal unit, P. O. Box 92
Srinagar (Garhwal) – 246174, India
Email: vjoshi1963@hotmail.com
Tel: 0091-1368-252603 (O)
Fax: 0091-1368-251159 and 252424

Er. K. Kumar

G B Pant Institute of Himalayan
Environment and Development
Kosi, Almora – 263643, India
Email: kireetpan@yahoo.com
Tel: 0091-5962-241041 and 241159
ext 39
Fax: 0091-5962-241150

NEPAL

Prof. Dr. Kedar Lal Shrestha

Chief Advisor
Ministry of Science and Technology
His Majesty's Government of Nepal
Singh Durbar, Kathmandu, Nepal
Email: klshrestha@most.gov.np
Tel: 977-1-5533028 (Res), 977-1-
4244698 (Office)
Fax: 977-1-4225474

Dr. Madan Lal Shrestha
Director General
Department of Hydrology &
Meteorology
Babar Mahal
Kathmandu, Nepal
P. O. Box 406
Email: madanls@hotmail.com
Tel: 977-1-4248808, 977-1-4262374
Fax: 977-1-4262348

Dr. Narendra Shakya
Institute of Engineering
Tribhuvan University
Pulchowk, Lalitpur, Nepal
Email: nmsioe@yahoo.com

Dr. Balkrishna Sapkota
Institute of Engineering
Tribhuvan University
Pulchowk, Lalitpur, Nepal
Email: balkrishna2005@yahoo.com

Mr. Motilal Ghimire
Lecturer, Central Department of
Geography
Tribhuvan University
Kathmandu, Nepal
Email: cdg@wlink.com.np or
motilal@wlink.com.np
Tel: 977-1-4330329, 977-1-4333157

Ms. Archana Shrestha
Central Department of Meteorology
Tribhuvan University
Kirtipur, Nepal

Mr Narayan Prasad Gautam
Department of Water Induced
Disaster Prevention
Pulchowk, Lalitpur, Nepal

Mr. Bhaskar Singh Karki
King Mahendra Trust for Nature
Conservation Office
Jawalakhel, Lalitpur, Nepal

Mr. B. Basnet
King Mahendra Trust for Nature
Conservation Office
Jawalakhel, Lalitpur, Nepal

Dr. S. R. Joshi
Bureau of Standards and Metrology
Balaju, Kathmandu
Member, Scientific Committee
Institute for Development and
Innovation (IDI)
Email: ozone@ntc.net.np

Dr. Kanti Joshi (Shrestha)
Royal Nepal Academy for Science
and Technology (RONAST)
Khumaltar, Lalitpur
Nepal
Email: ozone@ntc.net.np

Dr. Prahlad Thapa
Department of Horticulture
Ministry of Agriculture and
Cooperatives
Khumaltar, Lalitpur, Nepal

Mr. S. Dhungel
Water and Energy Commission
Singh Durbar
Kathmandu, Nepal

Mr. Kiran Raj Shrestha
Agriculture Research Station
Lumle, Pokhara, Nepal

Mr. Ratnakar Adhikari
SAWTEE
256 Lamtangeen Marg
Baluwatar, Kathmandu, Nepal
Tel: 977-1-4415824

PAKISTAN

Dr. Amir Muhammed
Chairman, SASCOM and
President, ASIANICS
P. O. Box 2316
Islamabad, Pakistan

Mr. Anjum Bari Farroqi

Director
Pakistan Meteorological Department
Sector H-8.2
Islamabad, Pakistan

Dr. Usman Qazi

Cameos Consultants
28 Saleem Plaza, Off Jinnah Road
Quetta, Pakistan

Dr. Khalid M. Siddiqui

Natural Resource Management and
Development Consultant
House No. 454B, Street 11, F-10/2
Islamabad, Pakistan
Email: kmsconsultant@mailcity.com
Tel: 051-212546

Dr. Munir Sheikh

Global Change Impact Studies Centre
Islamabad
Pakistan

Dr. Pervaiz Amir

Manager (Technical Assistance)
ASIANICS Agro-Dev International
House #13, Street #49, F-6/4
Islamabad, Pakistan

Mr. Zaffar Mahmood

Researcg Associate
ASIANICS Agro-Dev International
House #13, Street #49, F-6/4,
Islamabad
P.O. Box 2316, Pakistan
Email: zafariqureshi@hotmail.com,
zafariqureshi@yahoo.com

**Mountain Research Initiative
(MRI)**

Dr. Alfred Becker

Potsdam Institute for Climate Impact
Research
Representative of the Mountain
Research Initiative (MRI)
P. O. Box 60 12 03
D-14412 Potsdam
Germany
Tel: +49/331/288-2541
Fax: +49/331/288-2600
Email: becker@pink-potsdam.de
Tel. priv.: +49/30/2 32 92 96

**NATIONAL WORKSHOP ON
IMPACT OF CLIMATE CHANGE ON
MOUNTAIN ENVIRONMENT IN
PAKISTAN**

I
PAKISTAN
2004

“National Workshop on Impact of Climate Change on Mountain Environment in Pakistan”

**Venue: National University of Computer and Emerging Sciences,
Islamabad**

August 07, 2004

PROGRAM

| | | |
|-------------|---|---|
| 09:00-09:05 | Recitation from the Holy Quran | |
| 09:05-09:15 | Welcoming Remarks/Introduction to Workshop | Dr. Amir Muhammed, <i>President, Asianics-Islamabad</i> |
| 09:15-09:50 | Background of the Project and Status report of the APN-supported project | Dr. Kedar Lal Shrestha <i>President Institute for Development & Innovation</i> |
| 09:50-10:25 | Climate change in mountain regions of Pakistan | Mr. Muhammad Munir Sheikh <i>Meteorological Expert, GCISC</i> |
| 10:25-10:40 | Tea Break | |
| 10:40-11:10 | Impact of Climate change on water resources in the mountainous areas of Pakistan | Dr. Shahid Ahmed, <i>Senior Director Water Resources PARC</i> and Mr. Ghulam Ali <i>Deputy Director Water Resources</i> |
| 11:10-11:40 | Glaciers in Pakistan-Impact of climate: Change and future perspective | Dr. Rakshan Roohi <i>SCO/Head RUP, WRRRI-NARC</i> |
| 11:40-12:20 | Socio-economic aspects of climate change in the Himalayan regions of Pakistan-Survey Report | Dr. Pervaiz Amir, <i>Manager Technical Assistance-Asianics</i> |
| 12:20-12:45 | Impact of climate change on mountain environment and eco-system | Dr. Khalid Siddiqi <i>Consultant Natural Resources Management</i> |
| 12:45-13:30 | General discussion and closing remarks | |
| 13:30-14:30 | Lunch | |

“National Workshop on Impact of Climate Change on Mountain Environment in Pakistan”

**Venue: National University of Computer and Emerging Sciences,
Islamabad
August 07, 2004**

List of Participants

| Sr. # | Name of Participant | Organization | Contact # |
|-------|---------------------------|--|--------------------------|
| 1 | Dr. Amir Muhammed | President-Asianics International | 051-2855032, 2276424 |
| 2 | Dr. Kedar Lal Shrestha | President-Institute For Development And Innovation-Nepal | +977-1-533-028 |
| 3 | Mr. Shoaib Sultan Khan | Chairman- Ruler Support Program (RSPN) | 051-2271926 |
| 4 | Dr. Pervaiz Amir | Manager Technical Assistance, Asianics | 051-2276424, 2876960 |
| 5 | Mr. Mohammad Munir Sheikh | Global Change Impact Studies Center-GCISC | 051-9219785 |
| 6 | Mr. Ghulam Ali | Pakistan Agriculture Research Council | 051-9202136, 03009561517 |
| 7 | Dr. Rakshan Roohi | Water Resources Institute, NARC | 051-9255074 |
| 8 | Dr. Naeem Manzoor | Global Change Impact Studies Center-GCISC | 051-9219785 |
| 9 | Mr. Khalid Siddiqi | Consultant | 051-4477771, 03005106704 |
| 10 | Dr. Nafees Sadiq Kisana | National Agricultural Research Council | 051-9255073, |
| 11 | Shehzad Jehangir | Global Change Impact Studies Centre-GCISC | 051-9219785 |
| 12 | Dr. Imtiaz Ahmed | Global Change Impact Studies Centre-GCISC | 051-9219785 |
| 13 | Mrs. Khalida Khan | Director, Mountain Development Centre- Lahore | 042-9230587, 03334321916 |
| 14 | Mr. Anjum Bari | Director, Pakistan Metrological Department, Sector H-8/2 | 051-9257313 |

Funding Sources outside

APN

Other funding source

- The Institutions in the participating countries provided necessary inputs in kinds and manpower.
- START funded the participation of two representatives from Mountain Research Initiative (MRI) in the Scoping Workshop held in Kathmandu on 2-5 October 2001.
- START funded training in 2002 of one research team member in AIACC Trieste workshop
- The Gueleph University of Canada funded the travel of one of the paper presenter, Ms. Archana Shrestha in the year-end meeting in Kathmandu, Nepal on 6-10 January 2003.

Glossary of Terms

| | |
|--------|--|
| AIACC | - A ssessments of I mpacts and A daptation to C limate C hange |
| APN | - A sia P acific N etwork for G lobal C hange |
| BGMS | - B ishkek G lobal M ountain S ummit |
| DSSAT | - D ecision S upport S ystem for A gro- T echnology T ransfer |
| ESSP | - E arth S ystem S cience P artnership |
| GCM | - G eneral C irculation M odel |
| GLOF | - G lacial L ake O utburst F lood |
| IGBP | - I nternational G eosphere- B iosphere P rogramme |
| IITM | - I ndian I nstitute for T ropical M eteorology |
| IPCC | - I ntergovernmental P anel on C limate C hange |
| MAIRS | - M onsoon A sia I ntegrated R egional S tudies |
| MRI | - M ountain R esearch I nitiative |
| PRA | - P articipatory R apid A ppraisal |
| RCM | - R egional C limate M odel |
| SAARC | - S outh A asian A ssociation for R egional C ooperation |
| SASCOM | - S outh A asian S TART C ommittee |
| SAWTEE | - S outh A sia W atch on T rade, E conomics & E nvironment |
| SPSS | - S tatistical P ackage for S ocial S cience |
| START | - G lobal change S ys T em for A nalysis R esearch and T raining |
| UNFCCC | - U nited N ations F ramework C onvention on C limate C hange |
| WSSD | - W orld S ummit on S ustainable D evelopment |
| WTO | - W orld T rade O rganization |

References

- Ageta, Y., N. Naito, M. Nakawo, K. Fujita, K. Shankar, A.P. Pokharel and D. Wangda (2001) Study project on the recent rapid shrinkage of summer-accumulation type glaciers in the Himalayas, 1997 – 1999. *Bulletin of Glaciological Research*, 18: 45-49.
- BAHC (1993). *Climate-Hydrology-Ecosystems Interrelations in Mountainous Regions: An International Initiative for Integrative Research*, BAHC Report No. 2, Becker, A., R. Avissar, D. Goodrich, D. Moon, and B. Sevruck (Eds.), IGBP-BAHC/UNEP Workshop, St Moritz, Switzerland, 2-5 December 1993.
- Hasnain, S.I. (1999) *Report on Himalayan Glaciology*. International Commission on Snow and Ice (ICSI), U.K.
- IGBP (1997) *Predicting Global Change Impacts on Mountain Hydrology and Ecology: Integrated Catchment Hydrology/Altitudinal Gradient Studies*, IGBP Report No. 43, Becker, A., and H. Bugmann (Eds.), IGBP Secretariat, Stockholm, Sweden.
- IGBP (2001) *Global Change and Mountain Regions*, The Mountain Research Initiative, IGBP Report No. 49, Becker, A., and H. Bugmann, IGBP Secretariat, Stockholm, Sweden.
- IHAS (2001) *Cryosphere Research in the Himalayas-Collected Papers on Glaciers in the Himalayas published in 1994-2001 by members of CREH*, Institute for Hydrospheric-Atmospheric Sciences (IHAS), Nagoya University, Japan.
- IPCC (2001) *Climate Change 2001: Impacts, Adaptation and Vulnerability. Contributions of the Working Group II to the Third Assessment Report of the IPCC*. Cambridge University Press, New York.
- Jodha, N.S. (2000) Globalization and Fragile Mountain Environments: Policy Challenges and Choices, *Mountain Research and Development*, 20, 4: 296-299.
- Olschak, B.C., A. Gansser and E.M. Buher (1988) *Himalayas*. Bookwise, New Delhi, India.
- Shrestha, A.B., Wake, C.P., Mayewski, P.A., and Dibb, J.E. (1999) Maximum Temperature Trends in the Himalayas and its Vicinity: An analysis based on temperature records from Nepal for the period 1971-1974. *Journal of Climate*, 12: 2775-2786.
- Shrestha, K.L. (2001) Global Change and the Himalayan Mountain Ecosystem. In: K.L. Shrestha (ed.), *Global Change and Himalayan Mountains, Proceedings of a Scoping Workshop, Kathmandu, Nepal, 2-5 October, 2001*, Institute for Development and Innovation, Lalitpur, Nepal.
- Subba, B. (2001) *Himalayan Waters*, The Panos Institute, South Asia, Kathmandu, Nepal.

SWATEE (2003) *Globalisation and Mountain Farmers: Tapping Opportunities and Mitigating Threats*, Munir, S. and K. Adhikari (Eds.), South Asia Watch on Trade, Economics & Environment (SAWTEE), Kathmandu, Nepal.