

Challenges in Bhutan: Human and Wildlife Conflict

Phuntsho Thinley

Principal Forest Officer/Conservation Biologist

**Ugyen Wangchuck Institute for Conservation and Environment Research
Bhutan**

Presentation outline

- 1 Background and Context**
- 2 Human-wildlife conflicts (HWCs) in Bhutan**
- 3 Challenges to managing HWCs in Bhutan**
- 4 HWC issues for further deliberation**
- 5 Acknowledgements**



1

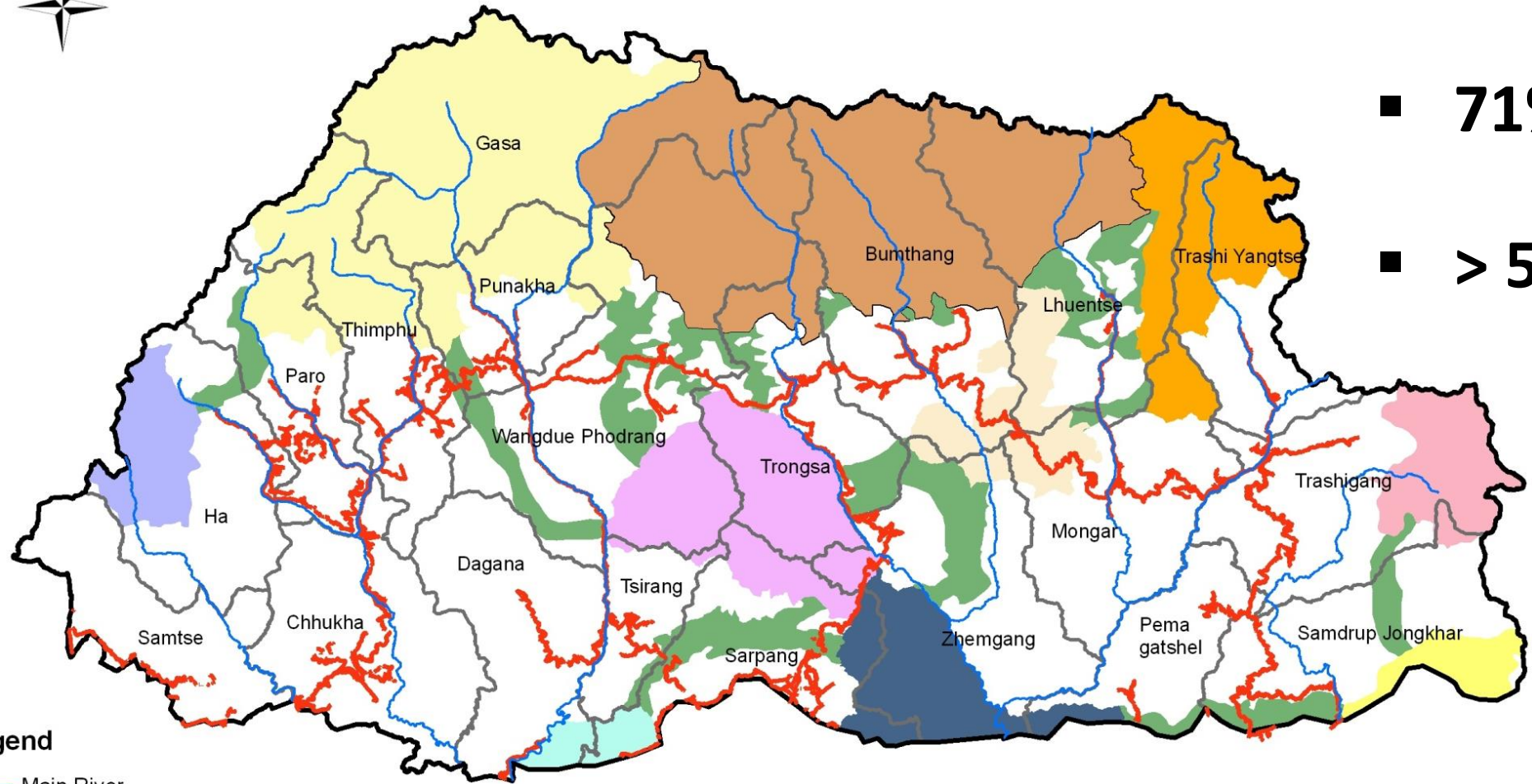
Background and Context



- **Located in the eastern Himalayas**
- **Known for rich biodiversity and sound environment policies**
- **735,553 people as of 30 May 2017**
- **62% live in the rural areas**
- **Subsisting on agro-pastoralism**

1

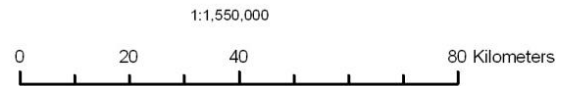
Background and Context



- 71% forest cover
- > 50% protected

Legend
— Main River
— National Highway
— Dzongkhag Boundary
— International Boundary

■ Bumdeling Wildlife Sanctuary
■ Jigme Dorji National Park
■ Jigme Singye Wangchuck National Park
■ Khaling Wildlife Sanctuary
■ Phipsoo Wildlife Sanctuary
■ Wangchuck Centennial Park
■ Royal Manas National Park
■ Sakteng Wildlife Sanctuary
■ Thrumshingla National Park
■ Torsa Strict Nature Reserve
■ Biological Corridor



2 Human-wildlife conflicts in Bhutan

Livestock depredation by wild carnivores

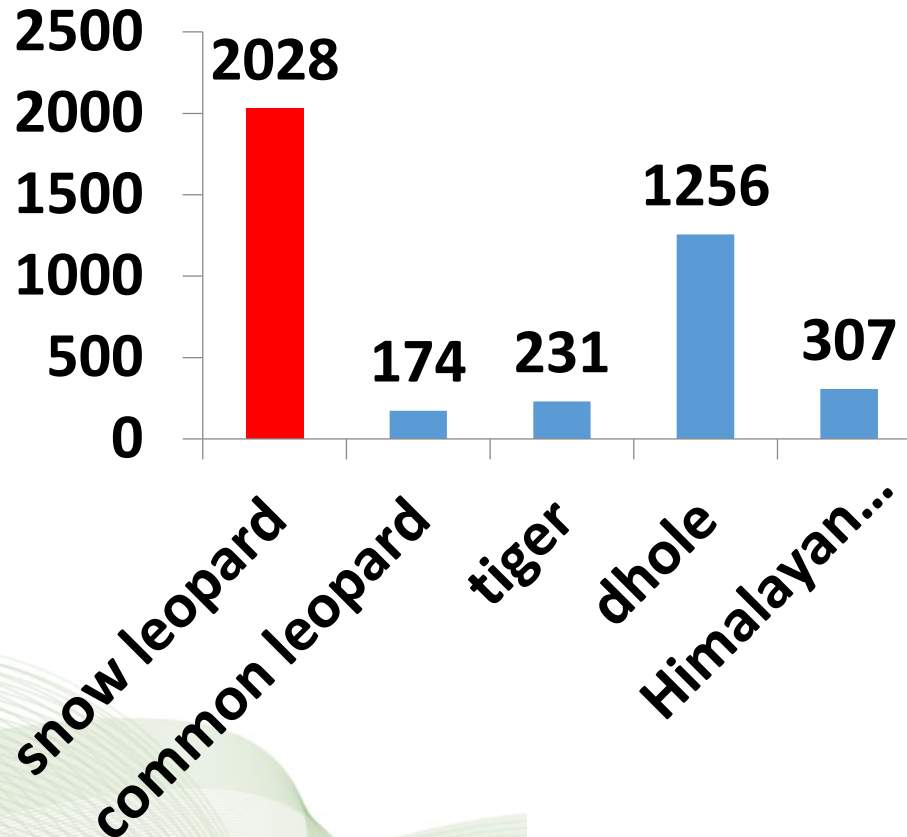
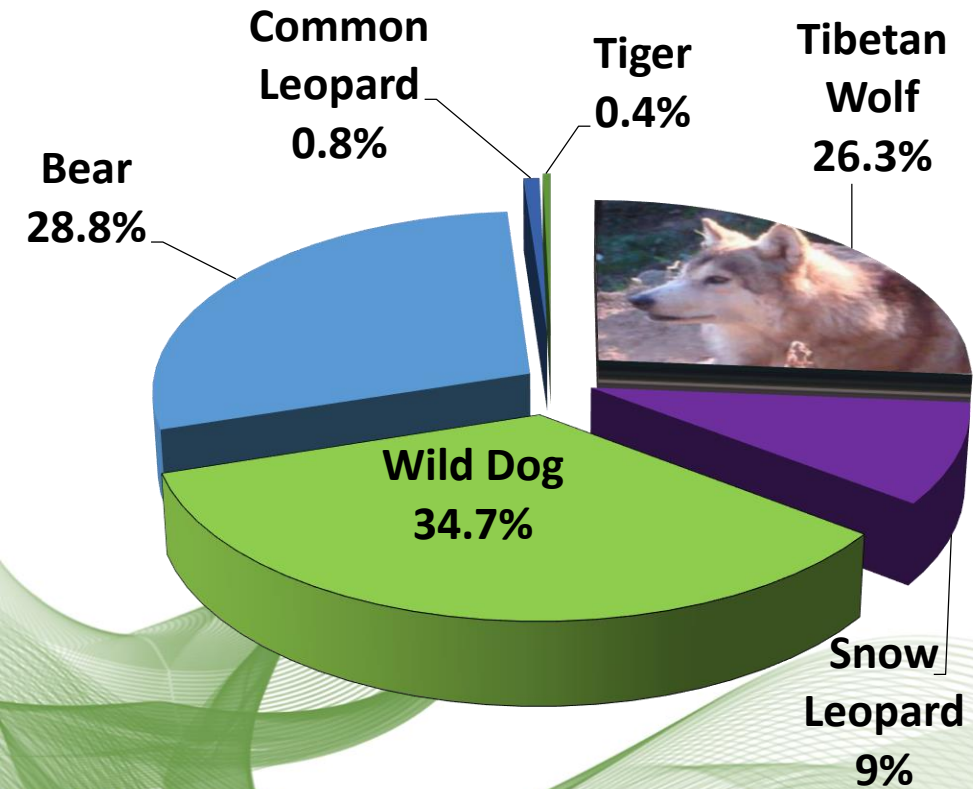


2 Human-wildlife conflicts in Bhutan

Livestock depredation by wild carnivores

Wangchuck Centennial National Park
(2009-2013; Norbu, 2018)

Jigme Dorji National Park
(2008-2012; Thinley et al., 2018)



2 Human-wildlife conflicts in Bhutan

Crop depredation by wild herbivores



2 Human-wildlife conflicts in Bhutan

Retaliatory killings and accidental killings



2 Human-wildlife conflicts in Bhutan

Poaching of wild predators



3 Challenges to managing HWCs in Bhutan

Conservation or Livelihood?



4 HWC issues for further deliberation

- **HWC is still highly polarized (animal-centric vs human-centric)**
- **HWC is highly context specific and difficult to generalize issues and solutions**
- **The science of wildlife damage management is still young, and lack of effective strategies to create harmonious co-existence**



5

Acknowledgements



The Royal Government of Bhutan for the administrative approval



The Department of Forests and Park Services for information and images



The IPBES for the opportunity



THANK YOU FOR YOUR ATTENTION

