



# Introduction of JBF-IPBES Project and objectives of the science-policy dialogue

Naoko Nakajima  
Tokyo Sustainability Forum  
Institute for Global Environmental Strategies  
Japan

# About JBF-IPBES Project

- Project Title:  
“Capacity Building Project for the implementation of the IPBES Asia-Pacific Regional Assessment”
  - IGES (Institute for Global Environmental Strategies) conduct this project funded by Japan Biodiversity Fund (JBF) provided by MOEJ and managed by SCBD (Secretariat of the Convention on Biological Diversity)
  - Term: April 2016-
- 

# Project Components

- ◆ **Component 1:** Piloting approaches for bringing ILK into the Asia-Pacific regional Assessment
  - ◆ **Component 2:** Application of outputs from scenario analysis and modeling assessment (Deliverable 3c) to APRA and other regional assessments
  - ◆ **Component 3 :** Policy support for decision-makers and stakeholders
- 

# □ ILK Sub-regional Dialogue Workshops

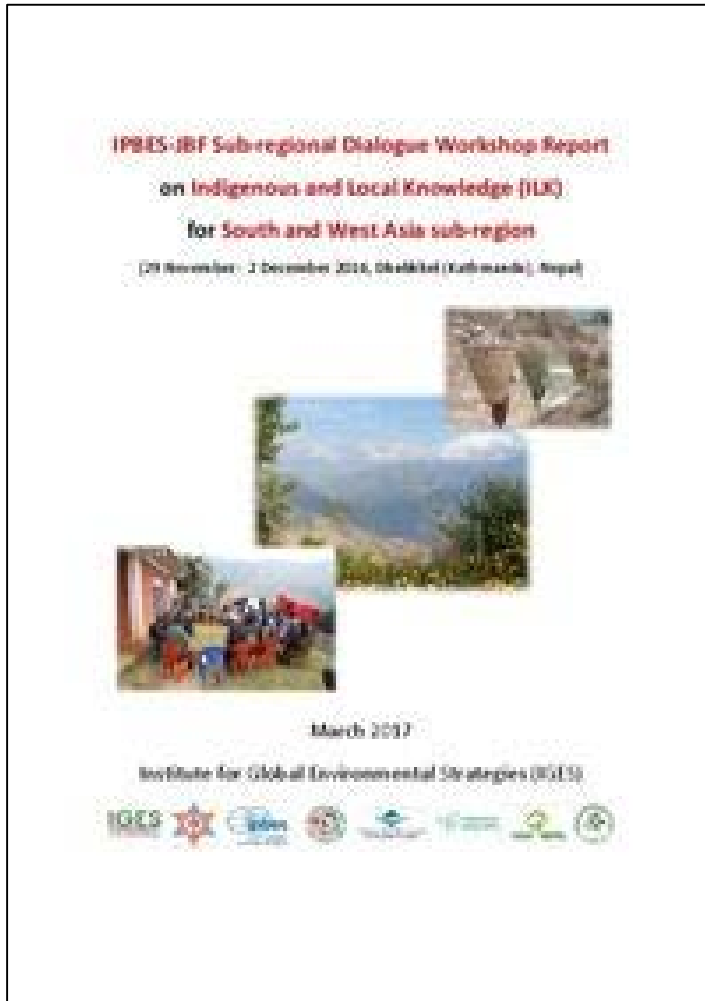
Sub-region	Country	City	Partner	Dates
South-East & North-East Asia	Thailand	Chiang Mai	Indigenous Peoples' Foundation for Education and Environment (IPF)	October 14-17, 2016
Pacific	New Zealand	Whangarei	He Puna Marama Trust	November 1-4, 2016
South & West Asia	Nepal	Dhulikhel	ReCAST	November 29 – December 2, 2016

+ Establishing ILK network at the sub-regional level



## Number of participants to the sub-regional workshops

- SE and NE Asia; 38 (23 participants and 15 local ILK holders)
- Pacific; 24
- South and West Asia; 43 (28 participants and 15 local ILK holders)



IPBES-JBF Sub-regional Dialogue Workshop Report on Indigenous and Local Knowledge (ILK) for South-East and North-East Asia sub-region, Thailand | IGES Publication Database

**IGES** Institute for Global Environmental Strategies Towards a Sustainable Asia-Pacific

Home Research News&Events **Publications** Networks About IGES

Home > Publications : IPBES-JBF Sub-regional Dialogue Workshop Report on Indigenous and Local Knowledge (ILK) for South-East and North-East Asia sub-region, Thailand

Conference Proceeding

### IPBES-JBF Sub-regional Dialogue Workshop Report on Indigenous and Local Knowledge (ILK) for South-East and North-East Asia sub-region, Thailand

In IPBES-JBF Sub-regional Dialogue Workshop 14 - 17 October 2016, Chiang Mai, Thailand  
 Editor: Wilfredo V. ALANGUI, Kaoru ICHIKAWA and Yasuo TAKAHASHI  
 Contributor: Wataru SUZUKI, Yoichi SAKURAI, Satoru TANAKA, Tomoshi ICHIKAWA, and Emma FUSHIMI  
 Copyright: Institute for Global Environmental Strategies | 2017-03

JBF Capacity Building Project held the South-East and North-East Asia sub-regional dialogue workshop in Chiang Mai, Thailand from 14 to 17 October, 2016, organised by IGES and funded by Japan. ILK holders/experts and experts on ILK from South-East and North-East Asia attended. The presentation by ILK holders/experts and the discussion result of the workshop are described in this proceeding of the workshop.

Downloads

Topics: Biodiversity Language: English Publisher: Institute for Global Environmental Strategies (Tokyo) Page Information: 143 pages

---

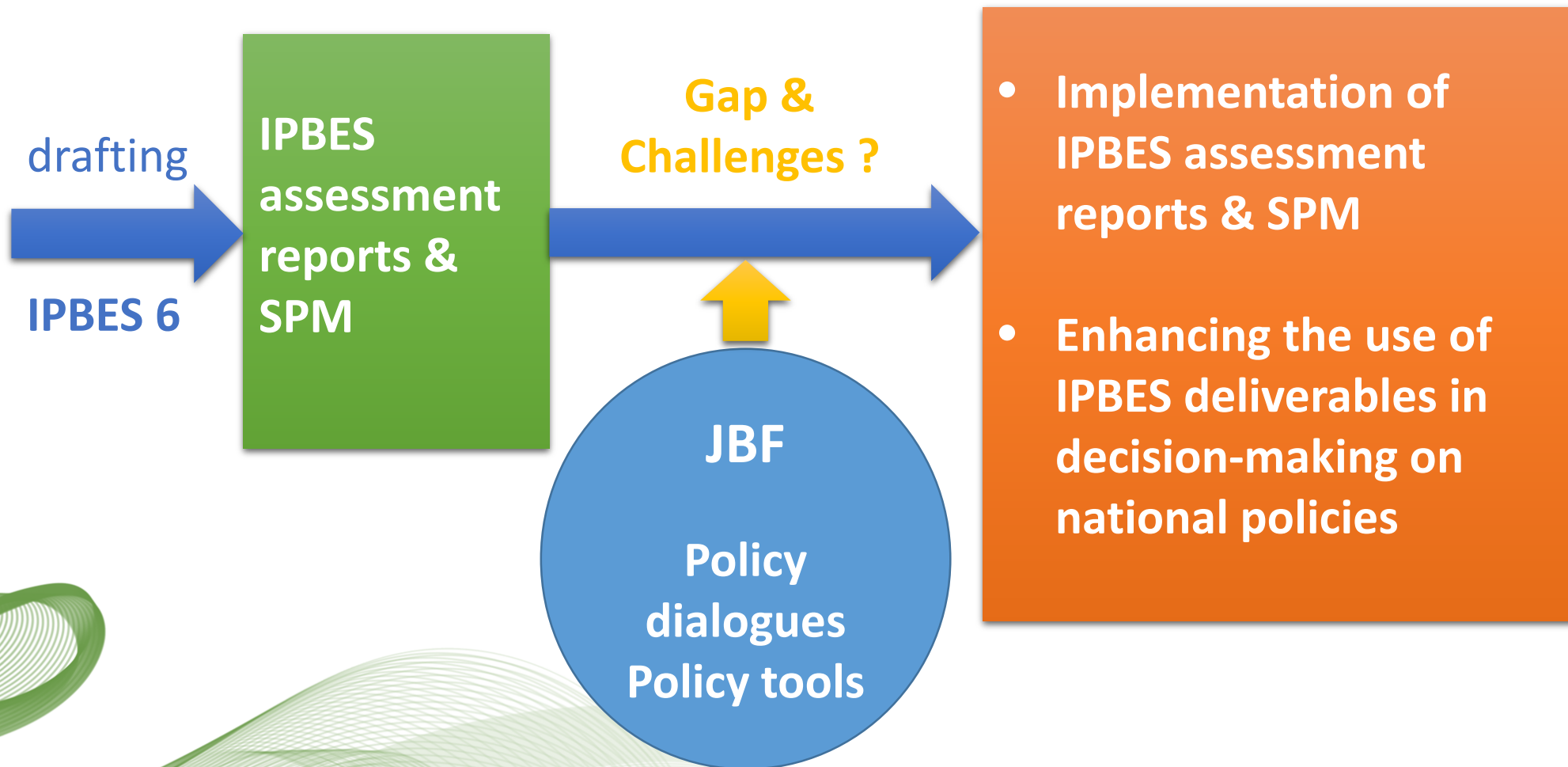
<p>Seminars &amp; Symposiums</p> <p>E-newsletter</p> <p>Press Releases</p> <p>Announcements</p>	<p>About IGES</p> <p>Access</p> <p>Employment</p>	<p>Sitemap</p> <p>Site Policy</p> <p>Copyright Permission</p> <p>日本語</p>	<p><b>IGES</b> Institute for Global Environmental Strategies</p> <p>2108-11 Kamiyamaguchi, Hayama, Kanagawa,        240-0115 Japan        Tel: +81-46-855-3700 Fax: +81-46-855-3709        Contact us</p>
---	---	--	---

Copyright © 2017 Institute for Global Environmental Strategies (IGES). All Rights Reserved. Find us on YouTube

Final reports of the Sub-regional Dialogue Workshops were published on IGES-website

# Component 3

## Policy support for decision-makers and stakeholders



# Component 3 of the Capacity Building for the IPBES Asia-Pacific Regional Assessment: Sub-Regional Science-Policy Dialogues

## South Asia and West Asia:

27-28 February 2019 in Kathmandu

Nepal Government

1. Aims to strengthen biodiversity science-policy interfaces through the uptake of the IPBES APRA

## Oceania:

4-5 April 2019 in Canberra

Australian Government



2. Aims to facilitate the understanding of APRA and its uptake

## Southeast Asia and East Asia:

Late October (tentative) 2019 in Bangkok

Government of Thailand

3. Aims to address challenges from the key messages in the SPM and policy options to deal with these challenges



# Sub-Regional Science-Policy Dialogues

## Key Components

The basis for discussion was focussed around Key Messages from the Summary for Policy Makers.

- **Information sessions** in which Assessment authors and others will overview the findings of the Assessment
- Contemporary **examples** of challenges faced – delivered by focal points
- **Groupwork discussions** focused on **specific and relevant issues**
- Collective **problem-solving (policy options)** with the guidance of facilitators
- Discussions on the **uptake** and use of the Assessment Report and on further needs of policy support by governments

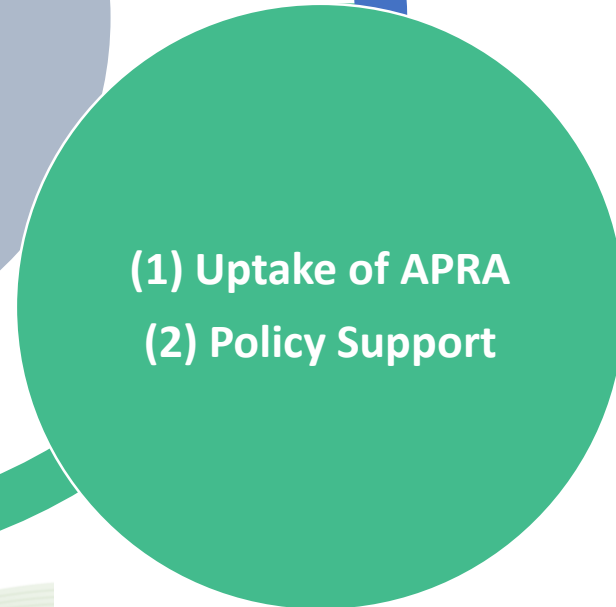
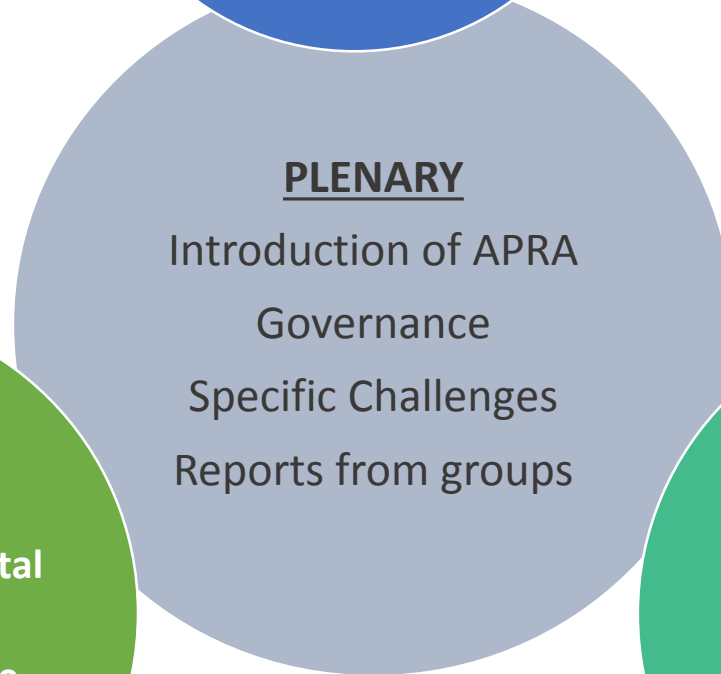
# Science-Policy Dialogue Structure

Knowledge Cafes on Specific Challenges from Key Messages



CAFÉ STAND

- Local media
- Post-event survey
- Post-dialogue Policy Brief



Group discussion on IPBES APRA dissemination/uptake and policy support/needs

**THANK YOU FOR YOUR ATTENTION**

