

University of Peradeniya



Prof. R.L Wijeyeweera
Deputy Vice Chancellor
University of Peradeniya



UNIVERSITY HISTORY

- ✘ Established in 1942 under the banner of University of Ceylon
- ✘ Shifted to Peradeniya in 1952
- ✘ Largest, comprehensive, residential University. with qualified staff, laboratories providing training for approximately around 12500 undergraduate students and substantial amount of postgraduate students

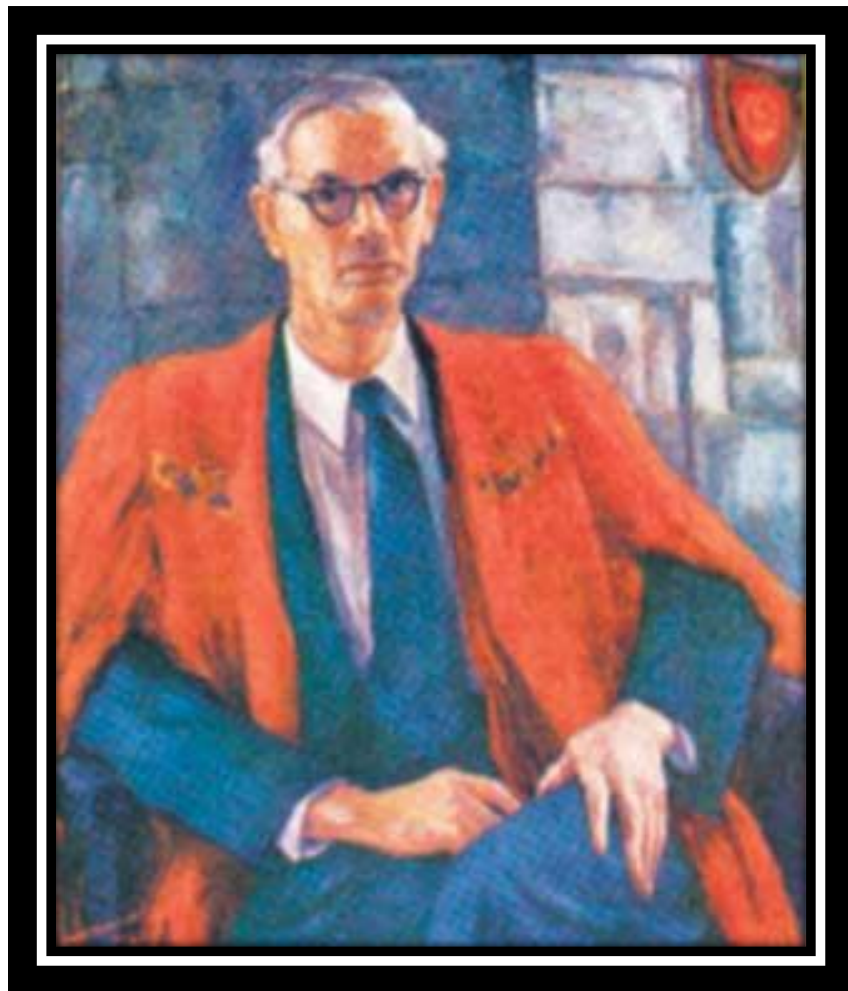




Copyright Dominic Sansoni







Sir Ivor Jennings



Senate building







Flowering season between April - June







Path leading to some hostels & Health Centre



Senate building







Senate building

SUMMARY OF GENERAL INFORMATION

- Total Land extent – 1695 acres
- Faculties – 09
- Academic Departments – 79
- Postgraduate Institutes – 04
- Libraries – 08
- Gymnasium -1
- Health Centre - 01
- Halls of Residence -20
- Guest Houses – 3
- University Quarters – 419



Cont..

SUMMARY OF GENERAL INFORMATION

- Large Play Ground witch comprise of
 - Two Tennis courts
 - Basket ball court
 - Athletics Facilities
 - Rugby & Foot ball Grounds
 - Cricket Ground
 - Hockey Ground
 - Swimming Pool







CENTRES /UNITS

- Career Guidance & Counseling Unit
- Centre for Distance & Continuing Education
- English Language Teaching Unit
- Centre for Environmental Studies
- Health Emergency &
Disaster Management Training Centre
- Information Technology Centre
- Staff Development Centre
- Centre for the Study of Human Rights
- The International Research Centre



CENTRES /UNITS



Centre for Distance & Continuing Education

-THE INTERNATIONAL RESEARCH CENTRE

- ✘ International research collaborations
- ✘ Student/ Staff exchange programs
- ✘ Foreign undergraduates/postgraduates students
- ✘ Consultancies for international partners
- ✘ Communications with Postgraduate and undergraduate foreign universities
- ✘ Centre for International Affairs

- ✘ MOUs (62) 22 (2010-2015)

FACULTY OF AGRICULTURE



No. of Students	No. of Academic Staff	No. of Non Academic Staff
1100	108	111

FACULTY OF AGRICULTURE

Degree program	Annual intake
B.Sc. (special) in Agricultural Technology & Management	200
B.Sc. in Animal Science & Fisheries	50
B.Sc. in Food Science & Technology	50
Total	300

FACULTY OF ALLIED HEALTH SCIENCES



No. of Students	No. of Academic Staff	No. of Non Academic Staff
951	51	49

FACULTY OF ALLIED HEALTH SCIENCES

✘ Degree Programmes

- + Nursing,
- + Physiotherapy,
- + Radiography,
- + Pharmacy,
- + Medical Laboratory Science

✘ Three Main Service Centres

- + Radiography,
- + Physiotherapy,
- + Exercise Laboratory

FACULTY OF ARTS



No. of Students	No. of Academic Staff	No. of Non Academic Staff
4637	175	81

FACULTY OF ARTS

Degree Programs

- ✘ Bachelor of Arts (General /Special) Degrees
- ✘ Bachelor of Commerce (B.Com) Degree,
- ✘ Bachelor of Law (LLB) Degree

- ✘ 16 Departments & 01 Unit (ELTU)
- ✘ **Annual Student Intake: 935**

FACULTY OF DENTAL SCIENCES

7 Depts. & 11 Divisions



No. of Students	No. of Academic Staff	No. of Non Academic Staff
419	51	135

FACULTY OF DENTAL SCIENCES

- ✘ Number of Undergraduate Students 419
- ✘ Dental Auxiliary Training School (DATS) – Intake - 45

- ✘ MSc Programmes in 6 disciplines
- ✘ M.Phils
- ✘ PhDs
 - + Number of Departments 07
 - + Number of Divisions 11
- ✘ The Faculty treats about 120,000 patients a year
- ✘ Oral Pathology Diagnostic services for all the hospitals in Sri Lanka
- ✘ Health Camps/Health education programs
- ✘ Inward patient care and ICU and theatre facilities

FACULTY OF ENGINEERING



No. of Students	No. of Academic Staff	No. of Non Academic Staff
1715	111	164

FACULTY OF ENGINEERING

Total Number of Students

Undergraduate (UG) - 1715

Postgraduates (PG) - 786

Category	Total Number of Programs	Programs offered
UG	06	Civil, Electrical & Electronic, Mechanical, Production, Computing, Chemical & Process Engineering
PG	09	Electrical & Electronic, Structural Engineering, Geotechnical Engineering, Environmental & Water Engineering, Construction Management, Highway & Traffic, Sustainable Built, Building Services Engineering, Engineering Management

- Faculty delivers more than 10 types of consultancies via Engineering Design Centre



FACULTY OF MANAGEMENT



No. of Students	No. of Academic Staff	No. of Non Academic Staff
654	24	17

DEGREE PROGRAMS AND CURRENT ACADEMIC STAFF

Degree Programs	No of Students
Undergraduate Programs	
Bachelor of Business Administration (BBA) (Special)	520
BBA (Online) offered through CDCE	171
Undergraduate Programs (In collaboration with other faculties)	
Bachelor of Commerce (B.Com) Special Degree-Faculty of Arts	150
Bachelor of Science (B.Sc.) in Computation & Management Special Degree- Faculty of Science	256
Bachelor of Arts (BA) General Degree-Faculty of Arts	1600
Postgraduate Programs	
Postgraduate Diploma in Management/Accounting	54
PhD Program	02

FACULTY OF MEDICINE



No. of Students	No. of Academic Staff	No. of Non Academic Staff
1494	104	189

In addition foreign students are enrolled

OTHER SERVICE CENTRES

- × Nuclear Medicine Unit
- × Haematology Service
- × Microbiology Service
- × Pathology Reporting Service

FACULTY OF SCIENCE



No. of Students	No. of Academic Staff	No. of Non Academic Staff
2011	96	113

FACULTY OF SCIENCE

Degree Programs Offered

- × 1. B.Sc. general degree
- × 2. Eleven B.Sc. Special degree programs
- × 3. B.Sc. in Applied Science
- × 4. B.Sc. in Computation and Management
- × 5. B.Sc. in Statistics and operations Research

Graduate Intake (2014/2015)

× BSc. Bio science program	-	142
× B.Sc. Physical Science program	-	219
× Computation and Management	-	59
× Statistics and operation Research	-	42

FACULTY OF SCIENCE

Outreach activities

1. Science Education Unit

Popularization of science

Residential Science camps in rural areas

Programs at the Science Education Resource Center

Teacher training programs

2. Science Industry Interaction Cell

Faculty of Vet. Medicine



Established in 1947 (Faculty status – 1985 with 5 Depts.)

No. of Students	No. of Academic Staff	No. of Non Academic Staff
367 (Annual Intake – 100)	40	62

FACULTY OF VETERINARY MEDICINE AND ANIMAL SCIENCE

Service units

Veterinary Teaching Hospital (*41,773 cases in 2015*)

Veterinary Teaching Farm (*1,764 cases in 2015*)

Rabies Diagnostic Unit (*200 cases in 2015*)

Food Safety and Quality Assurance Laboratory

(The first ISO 17025 accredited laboratory in the university system)



RESIDENTIAL FACILITIES

- ✘ Halls of residence for students (20)
- ✘ Students 7000, 3000, 2000
- ✘ Residential facilities for staff 418

Other facilities

Banks, Post office, Laundry,
Book Shops, Tailoring facilities,
Barber saloon, Grocery shops



RESIDENTIAL FACILITIES – IVOR JENNINGS



RESIDENTIAL FACILITIES - JAYATHILAKA



RESIDENTIAL FACILITIES - WIJEYAWARDENA



OPEN AIR THEATER



Available seating capacity -5000

THANK YOU...

