



APN
CAPaBLE

MAKING A DIFFERENCE
A WSSD Type II Partnership Initiative

**SCIENTIFIC CAPACITY
BUILDING AND ENHANCEMENT
FOR SUSTAINABLE
DEVELOPMENT IN
DEVELOPING COUNTRIES
(CAPaBLE)**

APN
Asia-Pacific Network for Global Change Research

Asia-Pacific Network for Global Change Research

The CAPaBLE Programme is a concrete initiative to realize parts 110 to 114 of the Johannesburg Plan of Implementation (JPOI) for the World Summit on Sustainable Development (WSSD) and has been registered as a WSSD Type II Partnership Initiative.

The five-year CAPaBLE programme is expected to develop and enhance scientific capacity in developing countries to improve their decision-making in the target areas related to:

climate change and water and food security

that are directly linked to their sustainable development. CAPaBLE is currently in its first phase, from September 2003 to March 2006, and is focussing on climate change. Phase II will focus on water and food security in the context of climate change and sustainable development and will run from April 2006 to March 2008.



Jeff Schmaltz, NASA

IMPLEMENTATION OF CAPaBLE

The objectives of CAPaBLE are expected to be achieved through a two-track approach:

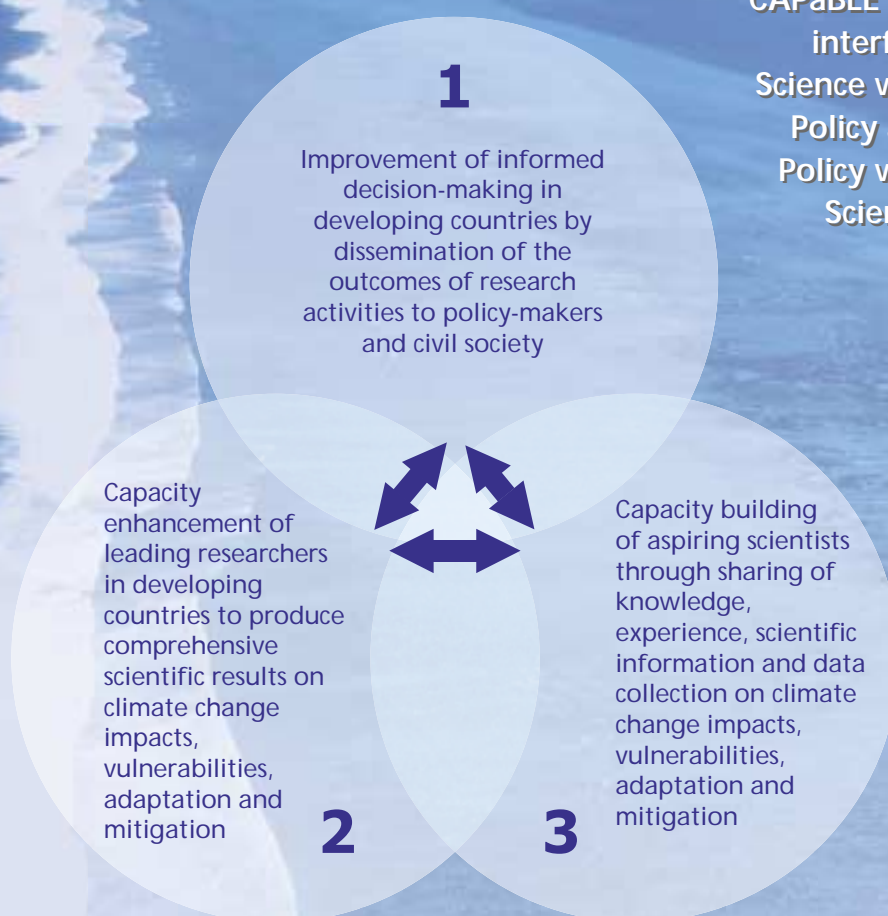
Selection of CAPaBLE Projects and their monitoring is performed by a small expert group who operates under APN's Steering Committee

- Capacity enhancement for experienced leading scientists
- Capacity building for young and aspiring scientists





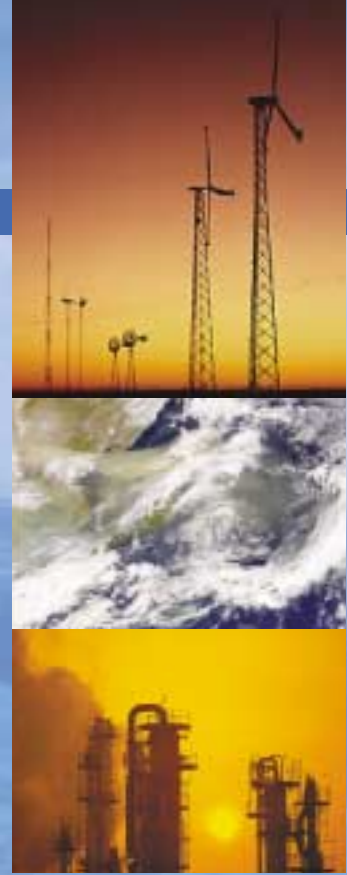
The three main objectives of CAPaBLE will interface Science with Policy and Policy with Science



Of particular relevance in the Johannesburg Plan of Implementation to the CAPaBLE Programme is part 111:

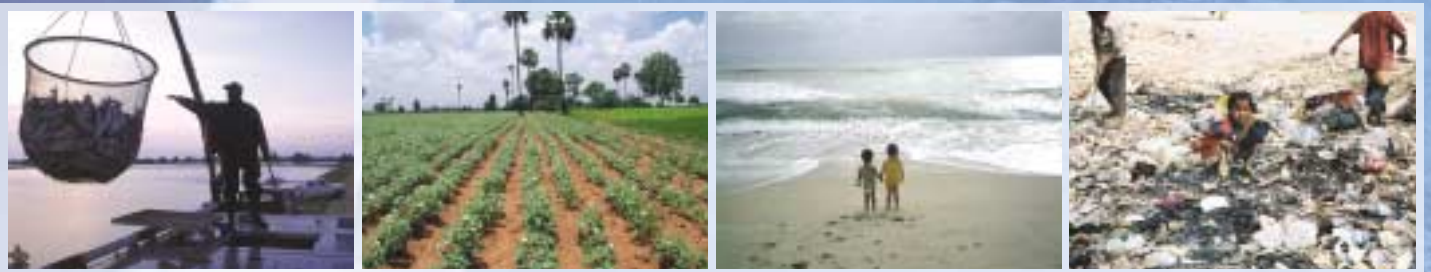
111. Establish regular channels between policy makers and the scientific community for requesting and receiving science and technology advice for the implementation of Agenda 21, and create and strengthen networks for science and education for sustainable development, at all levels, with the aim of sharing knowledge, experiences and best practices, and building scientific capacities, particularly in developing countries.

PHASE I 2003-2006: CLIMATE CHANGE



© NASA

A high priority APN goal is to improve the scientific



and technical capabilities of nations of the region

PHASE II 2006-2008: WATER & FOOD SECURITY

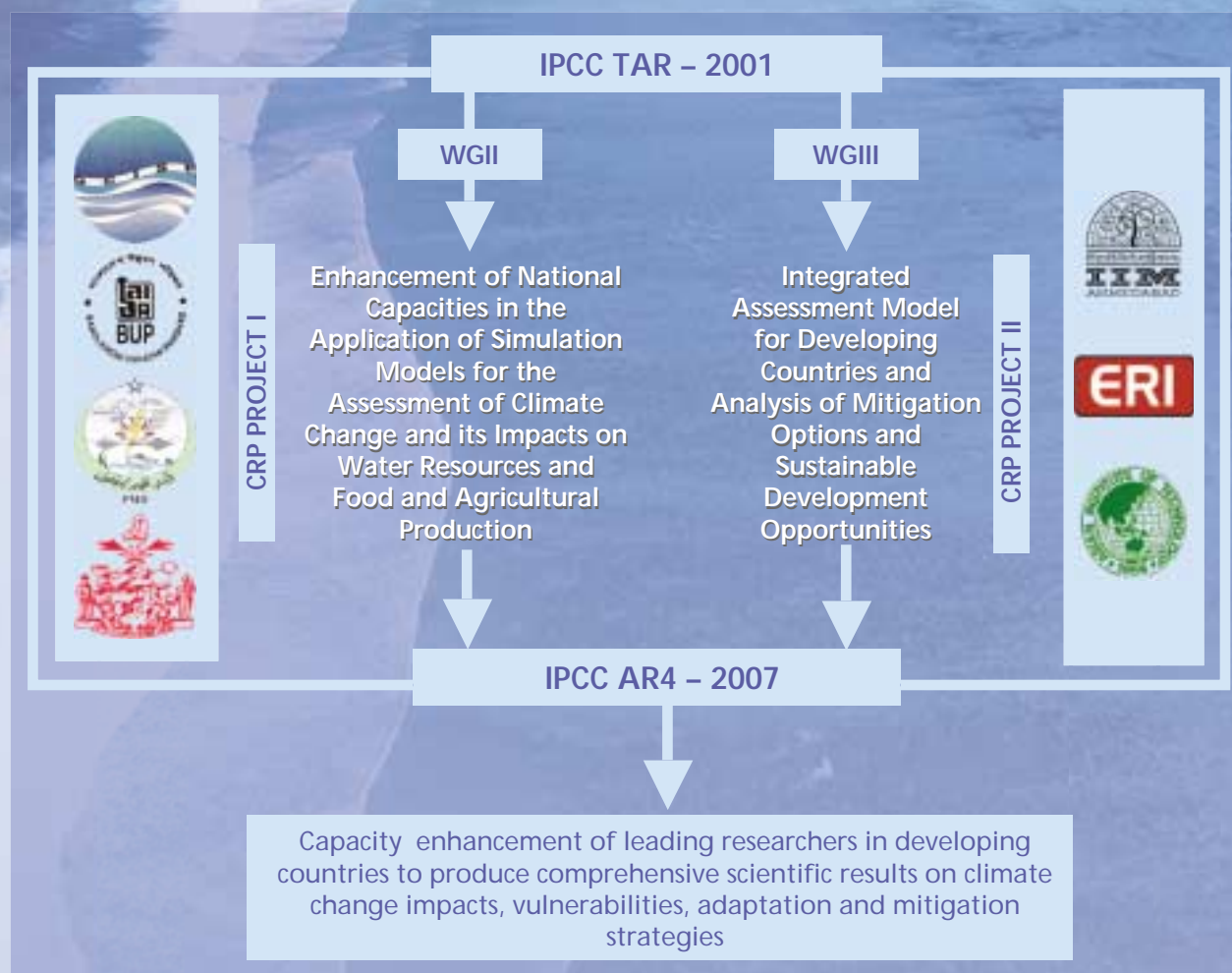


Comprehensive Research Projects with tangible outputs that are policy relevant



The focus is on two research themes from the suggested research priorities in the IPCC Third Assessment Report, taking into account the needs of policy-makers and relevance to Asia-Pacific developing countries. The results of the projects will contribute effectively to future climate change integrated assessments.

PARTNERSHIPS CREATING CAPACITY



PARTNERSHIPS CREATING CAPACITY

Capacity Building Projects

Building Capacity of Mekong River Countries to Assess Impacts from Climate Change

Building Scientific Capacity in Cambodia, Laos & Thailand



Case Study Approach on Assessment of Community Vulnerability and Adaptation to Impact of Climate Change on Water Resources and Food Production



Capacity building of aspiring scientists through sharing of knowledge, experience, scientific information and data collection on climate change impacts, vulnerabilities, adaptation and mitigation

Capacity Building Projects



Capacity Building for Greenhouse Gas Inventory Development in Asia Pacific Developing Countries

EAST-WEST CENTER



Training Institute on Climate and Extreme Events in the Pacific



APN-sponsored UNFCCC Workshop on the Preparation of National Communications from non-Annex I Parties



National Capacity Building Workshop on Global Change Research

Creating Climate Knowledge Networks through Strategic, Global Linkages



Travel Support: WCRP Modelling Workshop and CLIVAR International Conference



Capacity Building Workshop on Climate Change Mitigation with Locally Owned Technology and Systems



Building the Capacity of Mekong River Countries to Assess Impacts from Climate Change—Case Study Approach on Assessment of Community Vulnerability and Adaptation to Impacts of Climate Change on Water Resources and Food Production



Ministry of the Environment, Japan



Hyogo Prefectural Govt., Japan



Australian Government
Australian Greenhouse Office



Ministry for the
Environment
Kaitiaki-Ministry of the Environment
New Zealand



US Climate Change
Science Program
www.climate-science.gov

CAPaBLE is sponsored by the governments of
Australia, Japan, New Zealand and the U.S.A.

The **Asia-Pacific Network** for Global Change Research is an inter-governmental network for the promotion of global change research and links between science and policy-making in the Asia-Pacific Region.

Anyone interested in establishing closer contact with the APN or who would like further information on APN funding and other activities should contact the Secretariat.

APN Secretariat
IHD Centre Building, 5th Floor
1-5-1 Wakinohama Kaigan Dori
Chuo-Ku, Kobe 651-0073 Japan
Tel: +81-78-230-8017
Fax: +81-78-230-8018
Email: info@apn.gr.jp
Website: <http://www.apn.gr.jp>

